

STAR (RNAV) RWYS 15L, 15R, 33L, 33R
YOUTH TWO ARR (LINNG. YOUTH 2)

TORONTO/LESTER B. PEARSON INTL
 TORONTO ON

ATIS	112.15	120.825		
ARR	124.475	125.4	132.8	358.1
TORONTO TWR	118.7	118.35	236.6	

ALL ALTITUDES WILL BE ISSUED BY ATC

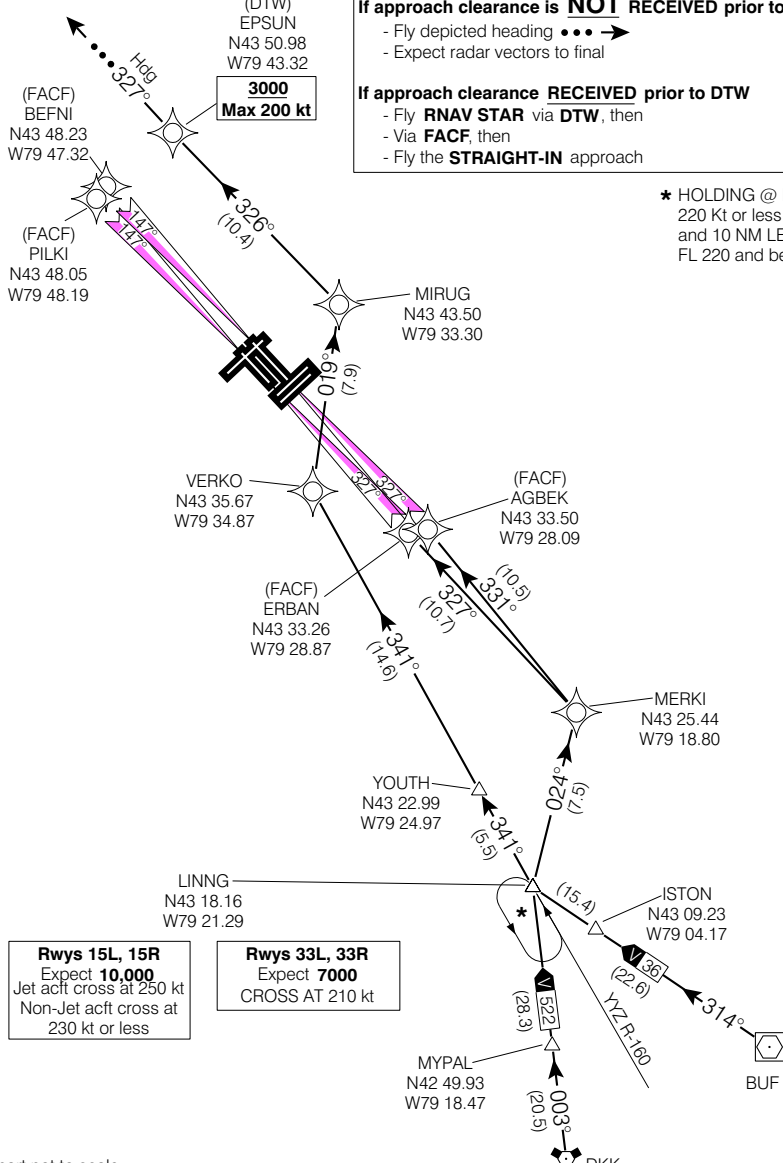
If RNAV STAR includes a DTW, the following procedures apply.
If approach clearance is NOT RECEIVED prior to DTW

- Fly depicted heading **•••** →
- Expect radar vectors to final

If approach clearance RECEIVED prior to DTW

- Fly **RNAV STAR** via **DTW**, then
- Via **FACF**, then
- Fly the **STRAIGHT-IN** approach

★ **HOLDING @ LINNG**
 220 Kt or less
 and 10 NM LEGS
 FL 220 and below



Rwys 15L, 15R
 Expect **10,000**
 Jet acft cross at 250 kt
 Non-Jet acft cross at 230 kt or less

Rwys 33L, 33R
 Expect **7000**
CROSS AT 210 kt

Chart not to scale
YOUTH TWO ARR (LINNG. YOUTH 2)

VAR 10° W (2000)

TORONTO ON

EFF 16 FEB 06

CHANGE: Editorial

TORONTO/LESTER B. PEARSON INTL

NAD83 ♦