

STAR (RNAV)

RWYS 05, 06L, 06R, 23, 24L, 24R

YOUTH TWO ARR (LINNG. YOUTH 2)

TORONTO/LESTER B. PEARSON INTL
TORONTO ON

ATIS	112.15	120.825		
ARR	124.475	125.4	132.8	358.1
TORONTO TWR	118.7	118.35	236.6	

ALL ALTITUDES WILL BE ISSUED BY ATC

If RNAV STAR includes a DTW, the following procedures apply.

If approach clearance is **NOT RECEIVED** prior to DTW

- Fly depicted heading $\bullet\bullet\bullet \rightarrow$
- Expect radar vectors to final

If approach clearance **RECEIVED** prior to DTW

- Fly **RNAV STAR** via **DTW**, then
- Via **FACF**, then
- Fly the **STRAIGHT-IN** approach

* HOLDING @ LINNG

220 Kt or less
and 10 NM LEGS
FL 220 and below

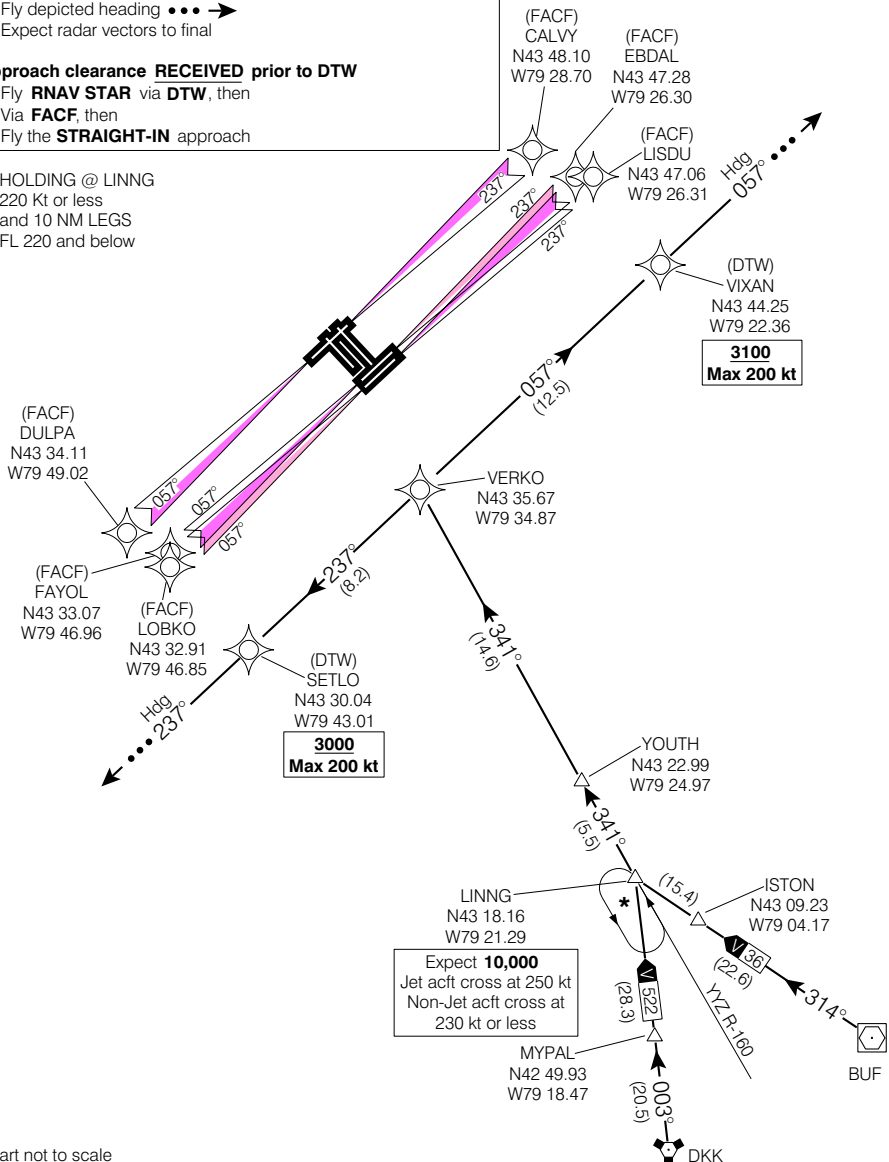


Chart not to scale

YOUTH TWO ARR (LINNG. YOUTH 2)

VAR 10° W (2000)

TORONTO ON

EFF 16 FEB 06

CHANGE: Editorial

TORONTO/LESTER B. PEARSON INTL

NAD83