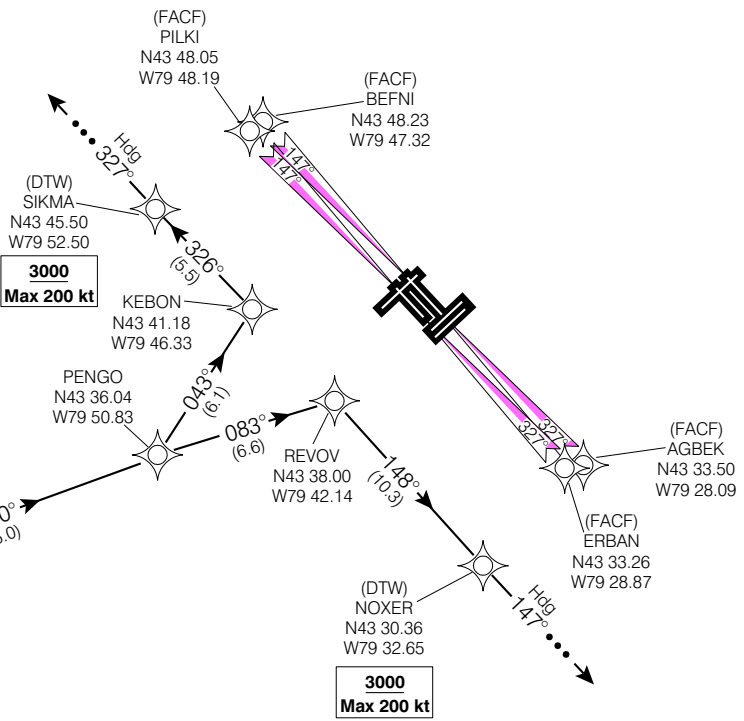


STAR (RNAV) RWYS 15L, 15R, 33L, 33R

WATERLOO TWO ARR (W.T. WTRLO 2)

TORONTO/LESTER B. PEARSON INTL
TORONTO ON



3000
Max 200 kt

3000
Max 200 kt

**Rwys 15L, 15R,
33L, 33R**
Expect **11,000**
Jet acft cross at 250 kt
Non-Jet acft cross at
230 kt or less

ATIS	112.15	120.825
ARR	124.475	125.4 132.8 358.1
TORONTO TWR	118.7	118.35 236.6

ALL ALTITUDES WILL BE ISSUED BY ATC

If RNAV STAR includes a DTW, the following procedures apply.

If approach clearance is NOT RECEIVED prior to DTW

- Fly depicted heading **••• →**
- Expect radar vectors to final

If approach clearance RECEIVED prior to DTW

- Fly **RNAV STAR** via **DTW**, then
- Via **FACF**, then
- Fly the **STRAIGHT-IN** approach

* **HOLDING @ YWT**
230 Kt or less

WATERLOO
115.0 YWT
Ch 97
N43 27.52
W80 22.76

CEDRE
N43 25.45
W80 43.16
R-270 (15.0)
R-258

TETOS
N43 18.57
W80 39.27
R-241 (15.0)

ROKTO
N43 30.58
W80 11.46

PENGU
N43 36.04
W79 50.83

REVVOV
N43 38.00
W79 42.14

(FACF) ERBAN
N43 33.26
W79 28.87

(FACF) AGBEK
N43 33.50
W79 28.09

(DTW) SIKMA
N43 45.50
W79 52.50

(FACF) PILKI
N43 48.05
W79 48.19

(FACF) BEFNI
N43 48.23
W79 47.32

WATERLOO TWO ARR (W.T. WTRLO 2)
EFF 13 APR 06
CHANGE: Editorial
VAR 10° W (2000)
TORONTO/LESTER B. PEARSON INTL
TORONTO ON
NAD83

NOT FOR NAVIGATION

Chart not to scale