

RWYS 05, 06L, 06R, 23, 24L, 24R

WATERLOO TWO ARR (WWT, WTRLO 2)

TORONTO/LESTER B. PEARSON INTL
 TORONTO ON

ATIS	112.15	120.825
TORR	124.475	125.4 132.8 358.1
TORONTO TWR	118.7	118.35 236.6

ALL ALTITUDES WILL BE ISSUED BY ATC

If RNAV STAR includes a DTW, the following procedures apply.

If approach clearance is NOT RECEIVED prior to DTW

- Fly depicted heading **...** →
- Expect radar vectors to final

If approach clearance RECEIVED prior to DTW

- Fly **RNAV STAR** via **DTW**, then
- Via **FACF**, then
- Fly the **STRAIGHT-IN** approach

★ **HOLDING @ YWT**
 230 Kt or less

WATERLOO
 115.0 YWT
 Ch 97

CEDRE
 N43 25.45
 W80 43.16

R-270
 (15.0)

R-258
 (15.0)

R-241
 (15.0)

TETOS
 N43 18.57
 W80 39.27

Rwys 05, 06L, 06R
 Expect **7000**
 CROSS AT 210 kt

Rwys 23, 24L, 24R
 Expect **11,000**
 Jet acft cross at 250 kt
 Non-Jet acft cross at 230 kt or less

ROKTO
 N43 30.58
 W80 11.46

(FACF) **DULPA**
 N43 34.11
 W79 49.02

PENGO
 N43 36.04
 W79 50.83

ERBUS
 N43 44.77
 W79 43.40

(DTW) **HERKI**
 N43 51.73
 W79 33.45
3000
Max 200 kt

(FACF) **CALVY**
 N43 48.10
 W79 28.70

(FACF) **EBDAL**
 N43 47.28
 W79 26.30

(FACF) **LISDU**
 N43 47.06
 W79 26.31

(DTW) **VIXAN**
 N43 44.25
 W79 22.36
3100
Max 200 kt

VERKO
 N43 35.67
 W79 34.87

(FACF) **LOBKO**
 N43 32.91
 W79 46.85

(FACF) **FAYOL**
 N43 33.07
 W79 46.96

BONED
 N43 28.86
 W79 56.58

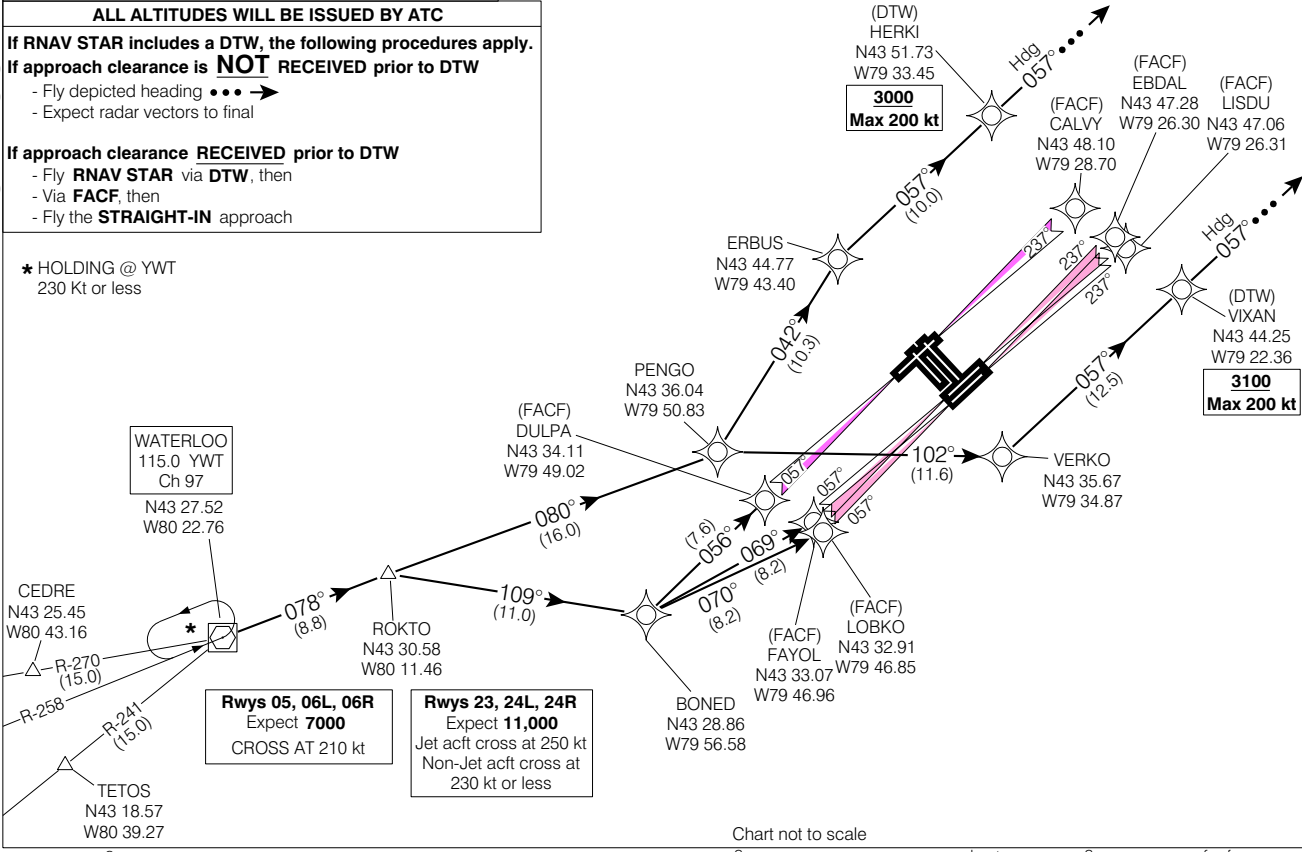


Chart not to scale

WATERLOO TWO ARR (WWT, WTRLO 2)

TORONTO/LESTER B. PEARSON INTL
 TORONTO ON

EFF 16 FEB 06 CHANGE: Editorial

VAR 10° W (2000)

NAD83