

STAR (RNAV) QUIET HOURS PROCEDURE  
RWYS 15L, 15R, 33L, 33R

TORONTO/LESTER B. PEARSON INTL  
TORONTO ON

WASIE TWO ARR (WASIE. WASIE 2)

ATIS 112.15 120.825  
ARR 124.475 125.4 132.8 358.1  
TORONTO TWR 118.7 118.35 236.6

ALL ALTITUDES WILL BE ISSUED BY ATC

If RNAV STAR includes a DTW, the following procedures apply.

If approach clearance is **NOT** RECEIVED prior to DTW

- Fly depicted heading  $\bullet\bullet\bullet \rightarrow$
- Expect radar vectors to final

If approach clearance **RECEIVED** prior to DTW

- Fly **RNAV STAR** via **DTW**, then
- Via **FACF**, then
- Fly the **STRAIGHT-IN** approach

\* HOLDING @ YSO  
20 NM LEGS  
FL 310 and below

Quiet hours procedure for use  
between 0030 and 0630 local  
time or when assigned by ATC.

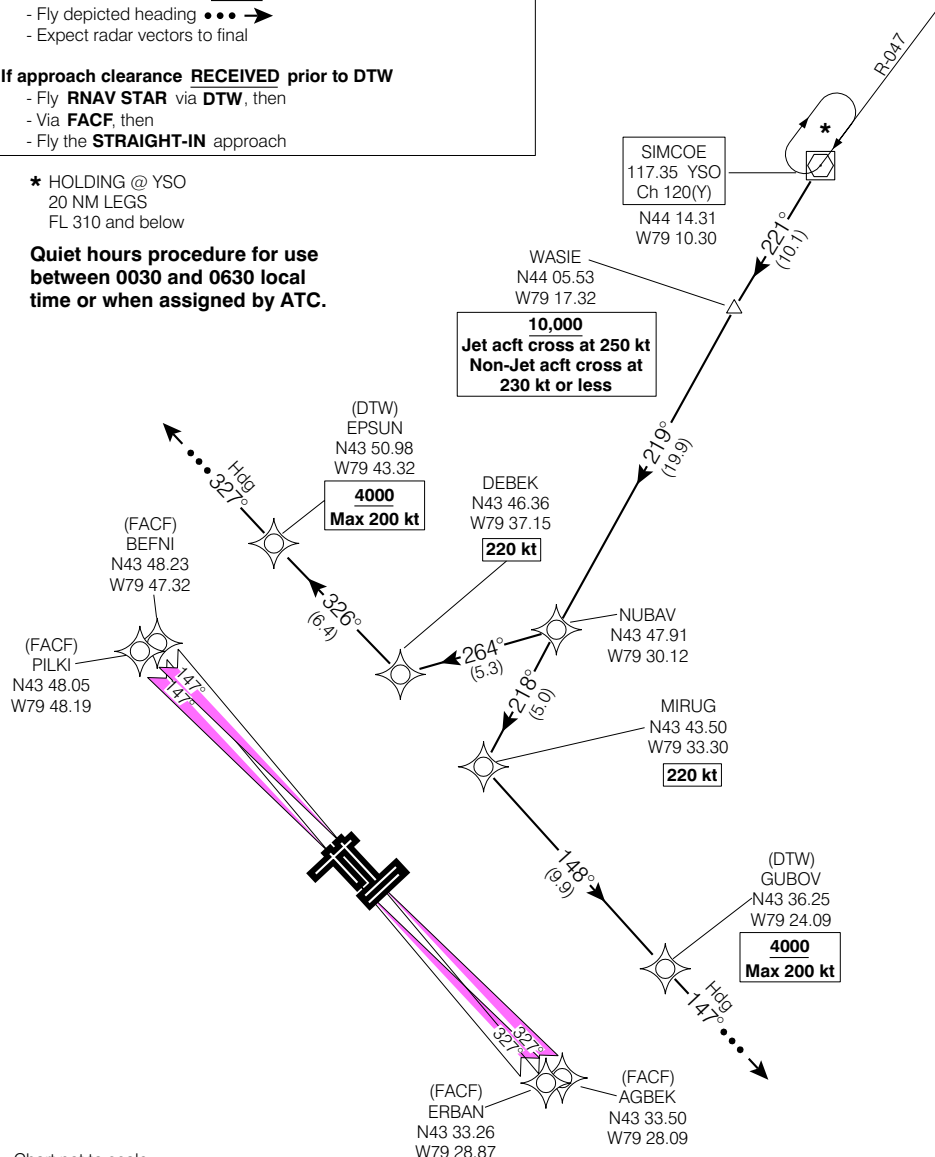


Chart not to scale

WASIE TWO ARR (WASIE. WASIE 2)

VAR 10° W (2000)

TORONTO ON

EFF 13 APR 06

CHANGE: Editorial

TORONTO/LESTER B. PEARSON INTL

NAD83 ♦

© 2006 Her Majesty The Queen in Right of Canada, Department of Natural Resources. All rights reserved

Source of Canadian Civil Aeronautical Data: © 2006 NAV CANADA. All rights reserved