

STAR (RNAV) QUIET HOURS PROCEDURE

RWYS 05, 06L, 06R, 23, 24L, 24R

WASIE TWO ARR (WASIE, WASIE 2)

TORONTO/LESTER B. PEARSON INTL
TORONTO ON

ATIS	112.15	120.825		
ARR	124.475	125.4	132.8	358.1
TORONTO TWR	118.7	118.35	236.6	

ALL ALTITUDES WILL BE ISSUED BY ATC

If RNAV STAR includes a DTW, the following procedures apply.

If approach clearance is **NOT** RECEIVED prior to DTW

- Fly depicted heading $\bullet\bullet\bullet \rightarrow$
- Expect radar vectors to final

If approach clearance **RECEIVED** prior to DTW

- Fly **RNAV STAR** via **DTW**, then
- Via **FACF**, then
- Fly the **STRAIGHT-IN** approach

★ HOLDING @ YSO

20 NM LEGS
FL 310 and below

Quiet hours procedure for use
between 0030 and 0630 local
time or when assigned by ATC.

Rwys 05, 06L, 06R
10,000
Jet acft cross at 250 kt
Non-Jet acft cross at 230 kt or less

Rwys 23, 24L, 24R
7000
Jet acft cross at 250 kt
Non-Jet acft cross at 230 kt or less

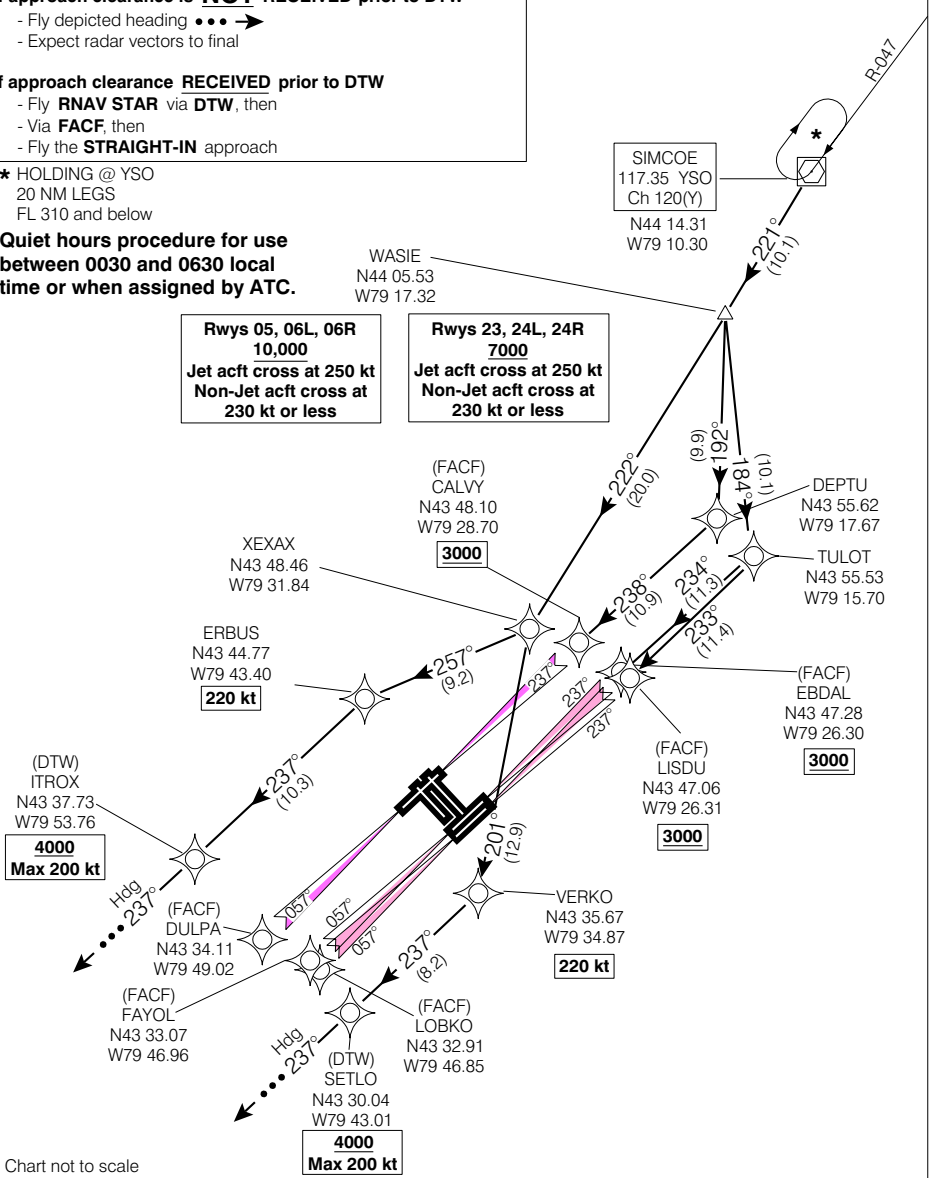


Chart not to scale

WASIE TWO ARR (WASIE, WASIE 2)

VAR 10° W (2000)

TORONTO ON

EFF 16 FEB 06

CHANGE: Editorial

TORONTO/LESTER B. PEARSON INTL

NAD83