

STAR (RNAV) RWYS 15L, 15R, 33L, 33R

TORONTO/LESTER B. PEARSON INTL

SIMCOE TWO ARR (YSO. SIMCO 2)

TORONTO ON

ATIS 112.15 120.825
ARR 124.475 125.4 132.8 358.1
TORONTO TWR 118.7 118.35 236.6

ALL ALTITUDES WILL BE ISSUED BY ATC

If RNAV STAR includes a DTW, the following procedures apply.

If approach clearance is **NOT** RECEIVED prior to DTW

- Fly depicted heading $\bullet\bullet\bullet \rightarrow$
- Expect radar vectors to final

If approach clearance **RECEIVED** prior to DTW

- Fly **RNAV STAR** via **DTW**, then
- Via **FACF**, then
- Fly the **STRAIGHT-IN** approach

* HOLDING @ YSO
 20 NM LEGS
 FL 310 and below

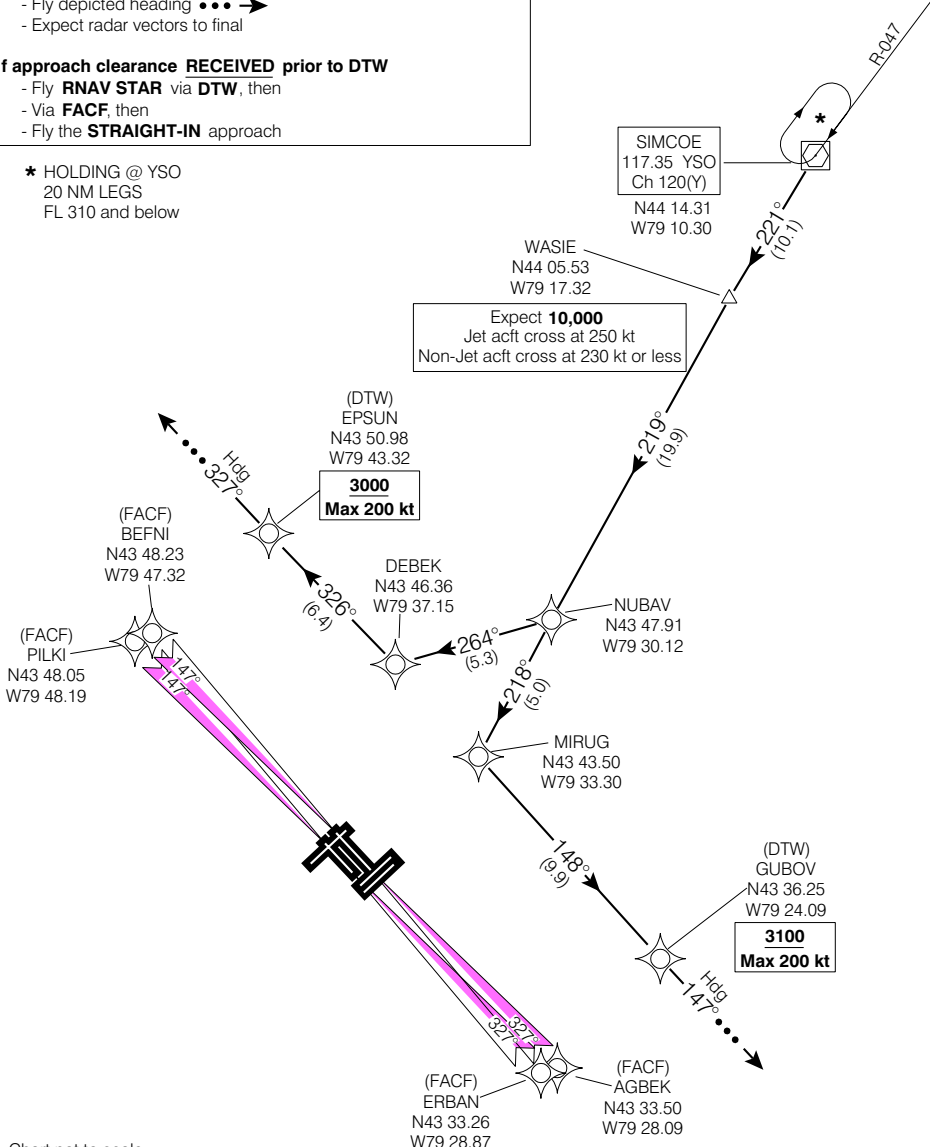


Chart not to scale

SIMCOE TWO ARR (YSO. SIMCO 2)

VAR 10° W (2000)

TORONTO ON

EFF 13 APR 06

CHANGE: Editorial

TORONTO/LESTER B. PEARSON INTL

NAD83