

STAR (RNAV)

RWYS 05, 06L, 06R, 23, 24L, 24R

SIMCOE TWO ARR (YSO. SIMCO 2)

TORONTO/LESTER B. PEARSON INTL
TORONTO ON

ATIS 112.15 120.825
ARR 124.475 125.4 132.8 358.1
TORONTO TWR 118.7 118.35 236.6

ALL ALTITUDES WILL BE ISSUED BY ATC

If RNAV STAR includes a DTW, the following procedures apply.

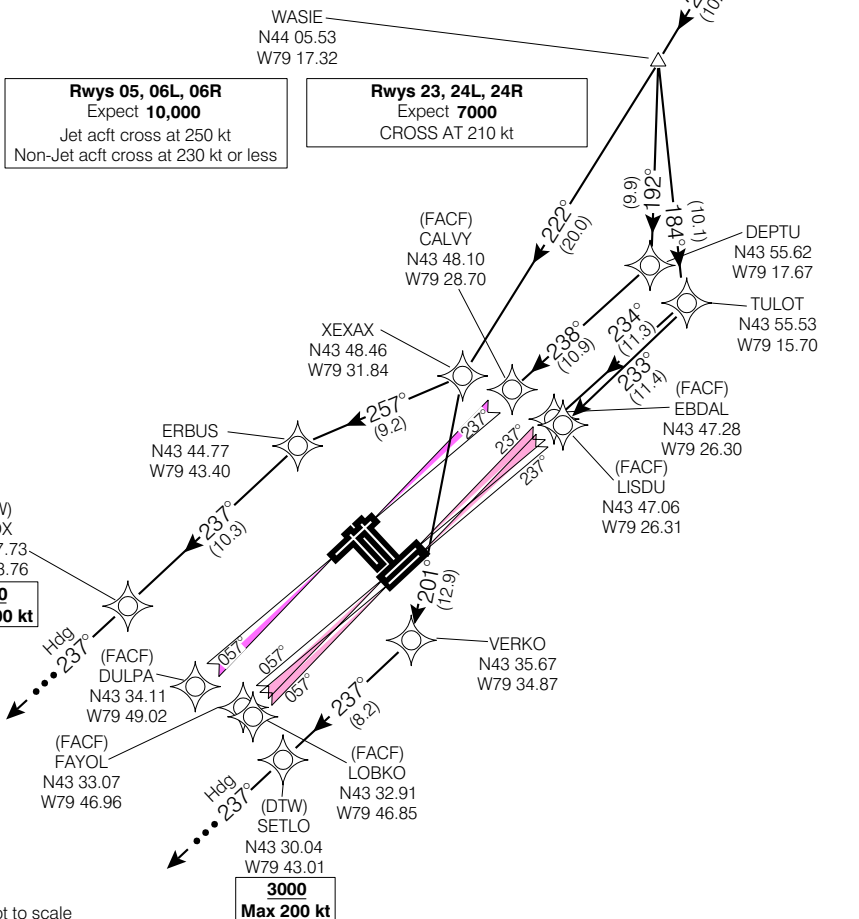
If approach clearance is **NOT RECEIVED** prior to DTW

- Fly depicted heading $\bullet\bullet\bullet \rightarrow$
- Expect radar vectors to final

If approach clearance **RECEIVED** prior to DTW

- Fly **RNAV STAR** via **DTW**, then
- Via **FACF**, then
- Fly the **STRAIGHT-IN** approach

* HOLDING @ YSO
20 NM LEGS
FL 310 and below



© 2006 Her Majesty The Queen in Right of Canada, Department of Natural Resources. All rights reserved

Source of Canadian Civil Aeronautical Data: © 2006 NAV CANADA. All rights reserved

SIMCOE TWO ARR (YSO. SIMCO 2)

VAR 10° W (2000)

TORONTO ON

EFF 16 FEB 06

CHANGE: Editorial

TORONTO/LESTER B. PEARSON INTL

NAD83