

ATIS	112.15	120.825		
ARR	124.475	125.4	132.8	358.1
TORONTO TWR	118.7	118.35	236.6	

ALL ALTITUDES WILL BE ISSUED BY ATC

If RNAV STAR includes a DTW, the following procedures apply.

If approach clearance is NOT RECEIVED prior to DTW

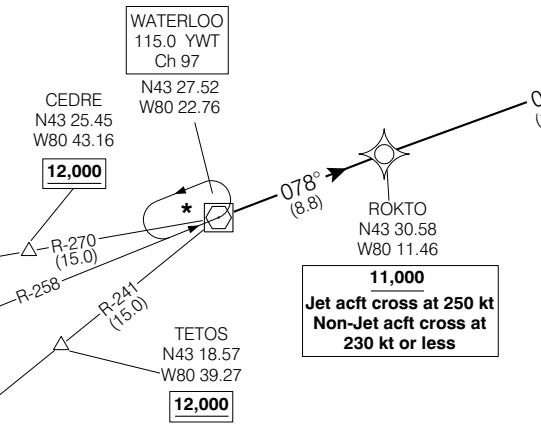
- Fly depicted heading **••• →**
- Expect radar vectors to final

If approach clearance RECEIVED prior to DTW

- Fly **RNAV STAR** via **DTW**, then
- Via **FACF**, then
- Fly the **STRAIGHT-IN** approach

★ **HOLDING @ YWT**
230 Kt or less

Quiet hours procedure for use between 0030 and 0630 local time or when assigned by ATC.



ROKTO TWO ARR (ROKTO, ROKTO 2)

TORONTO/LESTER B. PEARSON INTL

NOT FOR NAVIGATION

Source of Canadian Civil Aeronautical Data: © 2006 NAV CANADA All rights reserved

Chart not to scale