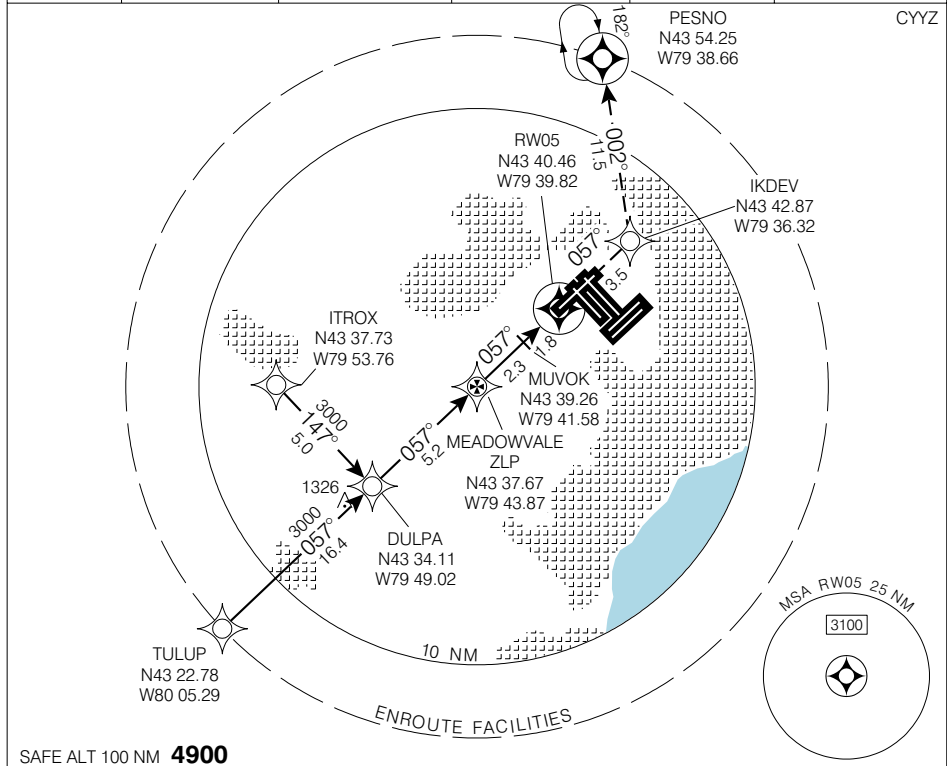


**RNAV (GNSS) RWY 05**

TORONTO/LESTER B. PEARSON INTL  
TORONTO ON

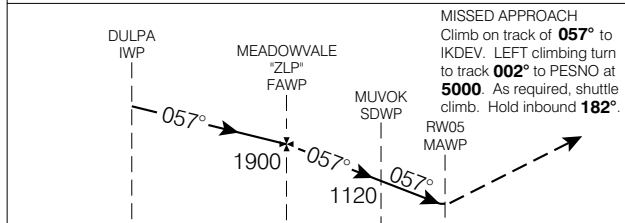
<b>ATIS</b> 112.15 120.825	<b>ARR</b> 124.475 125.4 132.8 358.1	<b>TORONTO TWR</b> 118.7 118.35 236.6	<b>GND</b> 118.0 119.1 121.9 121.65 275.8	<b>DEP</b> 128.8 127.575 363.8	<b>ELEV 569</b> <b>TDZE 05 564</b>
----------------------------------	--	---	---	--------------------------------------	---------------------------------------

© 2006 Her Majesty The Queen in Right of Canada, Department of Natural Resources. All rights reserved



SAFE ALT 100 NM **4900**

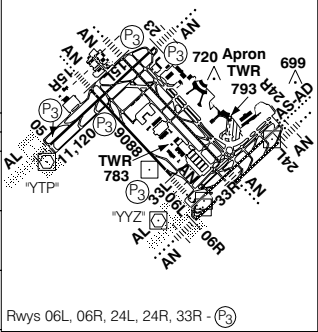
Source of Canadian Civil Aeronautical Data: © 2006 NAV CANADA. All rights reserved



**MISSED APPROACH**  
Climb on track of **057°** to IKDEV. LEFT climbing turn to track **002°** to PESNO at **5000**. As required, shuttle climb. Hold inbound **182°**.

TDZL Rwy 06L, 24R  
Rwy 05 first 3900' down 0.35%  
Rwy 15L-33R 11,050 x 200  
Rwy 06L-24R 9697 x 200  
Rwy 06R-24L 9000 x 200

CATEGORY	A		B		C		D
LNAV / VNAV	NOT AUTHORIZED						
LNAV	<b>1060</b>		(496)		1 RVR 50		
CIRCLING	<b>1120</b>	(551)	1 ¾	<b>1120</b>	(551)	2	<b>1180</b>
						(611)	2



Rwys 06L, 06R, 24L, 24R, 33R - (P3)

Knots	70	90	110	130	150
Min:Sec					

**RNAV (GNSS) RWY 05**

N43 40 38 W79 37 50

VAR 10° W (2005)

TORONTO ON

EFF 13 APR 06

CHANGE: GPS to GNSS

TORONTO/LESTER B. PEARSON INTL

NAD83