

SID (VECTOR)  
**PEARSON NINE DEP** (PEAR 9.)

TORONTO/LESTER B. PEARSON INTL  
 TORONTO ON

**ATIS 112.15 120.825**  
**CLNC DEL 121.3**  
**GND 118.0 119.1 121.9 121.65 275.8**  
**TORONTO TWR 118.7 118.35 236.6**  
**DEP 128.8 127.575 363.8**

TURBO-JET/FAN AIRCRAFT ONLY	
RWY	VNAP
ALL RWYS	* A or B


\* (see CAP GEN NOISE ABATEMENT PROCEDURES)


DO NOT EXCEED 250K  
 UNTIL ABOVE 10,000' ASL.

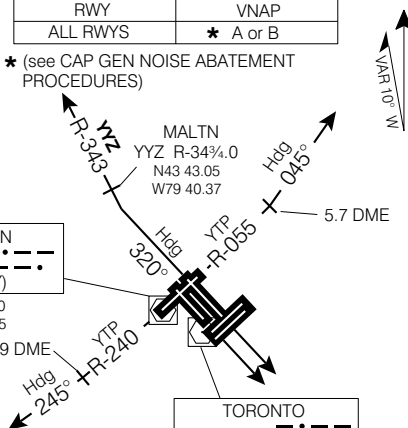
**CAUTION:** Simultaneous parallel departures may be in use.

This SID depends on Pilot NAV.

GROUND SPEED	90	120	140	160	180	200	250	300
380 FT/NM	570	760	890	1020	1140	1270	1590	1900
400 FT/NM	600	800	940	1070	1200	1340	1670	2000

PEARSON  
 116.55 YTP   
 Ch 112(Y)  
 N43 40.30  
 W79 39.85

TORONTO  
 112.15 YYZ   
 Ch 58(Y)  
 N43 39.48  
 W79 37.90



**DEPARTURE ROUTE DESCRIPTION**

Unless otherwise assigned by ATC:

- Rwy 05:** Intercept and maintain YTP R-055 outbound. At 5.7 DME fly hdg 045° or assigned hdg for vectors to assigned route. Climb to and maintain: 5000' ASL jet acft , 3000' ASL non-jet acft.
- Rwy 15L:** Requires minimum climb gradient of 400 ft/NM to 3000' ASL. Maintain Rwy hdg for vectors to assigned route. Cross YTP 7.9 DME at or above 3000' ASL. Jet Acft maintain 5000' ASL. Non-Jet Acft maintain 3000' ASL.
- Rwy 15R:** Requires minimum climb gradient of 380 ft/NM to 3000' ASL. Maintain Rwy hdg for vectors to assigned route. Cross YTP 7.9 DME at or above 3000' ASL. Jet Acft maintain 5000' ASL. Non-Jet Acft maintain 3000' ASL.
- Rwy 23:** Climb straight ahead until passing YTP. Then intercept and maintain YTP R-240 outbound. At 3.9 DME fly hdg 245° or assigned hdg for vectors to assigned route. Climb to and maintain: 5000' ASL jet acft , 3000' ASL non-jet acft.
- Rwy 33R:** Climb rwy hdg to 1100' ASL. Turn left hdg 320° to intercept YYZ R-343 outbound. Maintain YYZ R-343 outbound for vectors to assigned route. Climb to and maintain: 5000' ASL jet acft, 3000' ASL non-jet acft.

**NOTE:**

Rwys 05, 15L, 15R, 23 departures: for noise abatement no unauthorized turns below 3600' ASL, except as described in Noise Abatement Procedures Section D. 1 d).  
 Non-jet aircraft commence turn assigned at take-off at 1100' ASL (0700-2300 local).  
 Rwy 33R departure: for noise abatement no unauthorized turns below 3600' ASL nor prior to MALTN INTXN.

**COMMUNICATIONS FAILURE**

On recognition of a failure 20 minutes or less after take-off and in IFR weather conditions proceed as follows:

1. Transponder Mode A/3 7600;
2. Beyond 10 DME YTP proceed directly on course;
3. Do not climb above last assigned altitude for 5 minutes after recognition of failure, then;
4. Climb to flight plan altitude.

**PEARSON NINE DEP** (PEAR 9.)

EFF 16 FEB 06 CHANGE: Editorial

TORONTO ON  
 TORONTO/LESTER B. PEARSON INTL

NAD83