

STAR (RNAV)

RWYS 05, 06L, 06R, 23, 24L, 24R

TORONTO/LESTER B. PEARSON INTL  
TORONTO ON

**MANS THREE ARR** (BORDN.MANS3)(YMS.MANS3)

ATIS	112.15	120.825		
ARR	124.475	125.4	132.8	358.1
TORONTO TWR	118.7	118.35	236.6	

**ALL ALTITUDES WILL BE ISSUED BY ATC**

**If RNAV STAR includes a DTW, the following procedures apply.**  
**If approach clearance is NOT RECEIVED prior to DTW**

- Fly depicted heading **•••** →
- Expect radar vectors to final

**If approach clearance RECEIVED prior to DTW**

- Fly **RNAV STAR** via **DTW**, then
- Via **FACF**, then
- Fly the **STRAIGHT-IN** approach

\* HOLDING @ BORDN  
20 NM LEGS

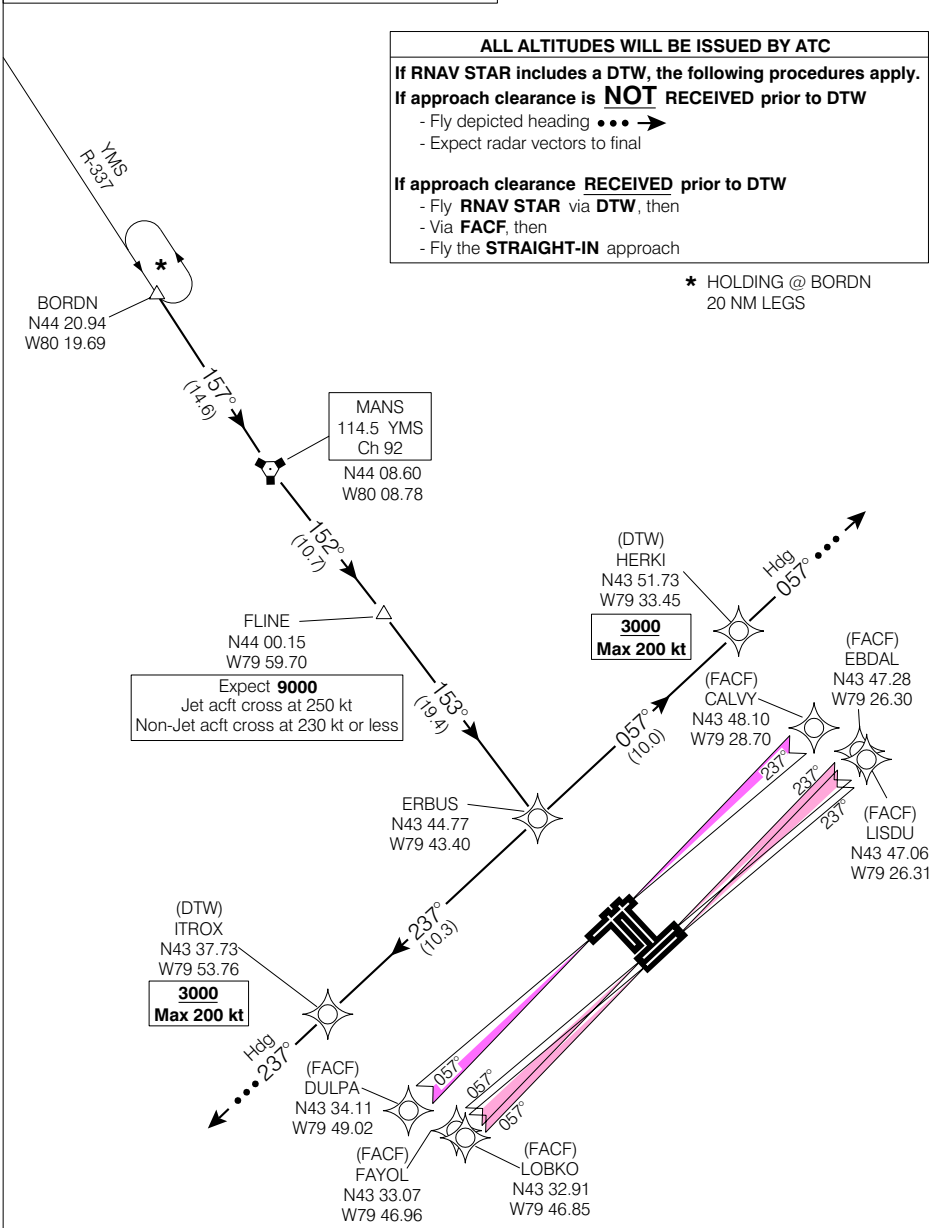


Chart not to scale

**MANS THREE ARR** (BORDN.MANS3)(YMS.MANS3) VAR 10° W (2000)

TORONTO ON

EFF 16 FEB 06

CHANGE: Editorial

TORONTO/LESTER B. PEARSON INTL

NAD83 ♦