

STAR (RNAV) QUIET HOURS PROCEDURE

RWYS 05, 06L, 06R, 23, 24L, 24R

LINNG ONE ARR (LINNG. LINNG 1)

TORONTO/LESTER B. PEARSON INTL

TORONTO ON

ATIS	112.15	120.825		
ARR	124.475	125.4	132.8	358.1
TORONTO TWR	118.7	118.35	236.6	

ALL ALTITUDES WILL BE ISSUED BY ATC

If RNAV STAR includes a DTW, the following procedures apply.

If approach clearance is **NOT RECEIVED** prior to DTW

- Fly depicted heading $\bullet\bullet\bullet \rightarrow$
- Expect radar vectors to final

If approach clearance **RECEIVED** prior to DTW

- Fly **RNAV STAR** via **DTW**, then
- Via **FACF**, then
- Fly the **STRAIGHT-IN** approach

★ HOLDING @ LINNG

- 220 Kt or less
- and 10 NM LEGS
- FL 220 and below

Quiet hours procedure for use between 0030 and 0630 local time or when assigned by ATC.

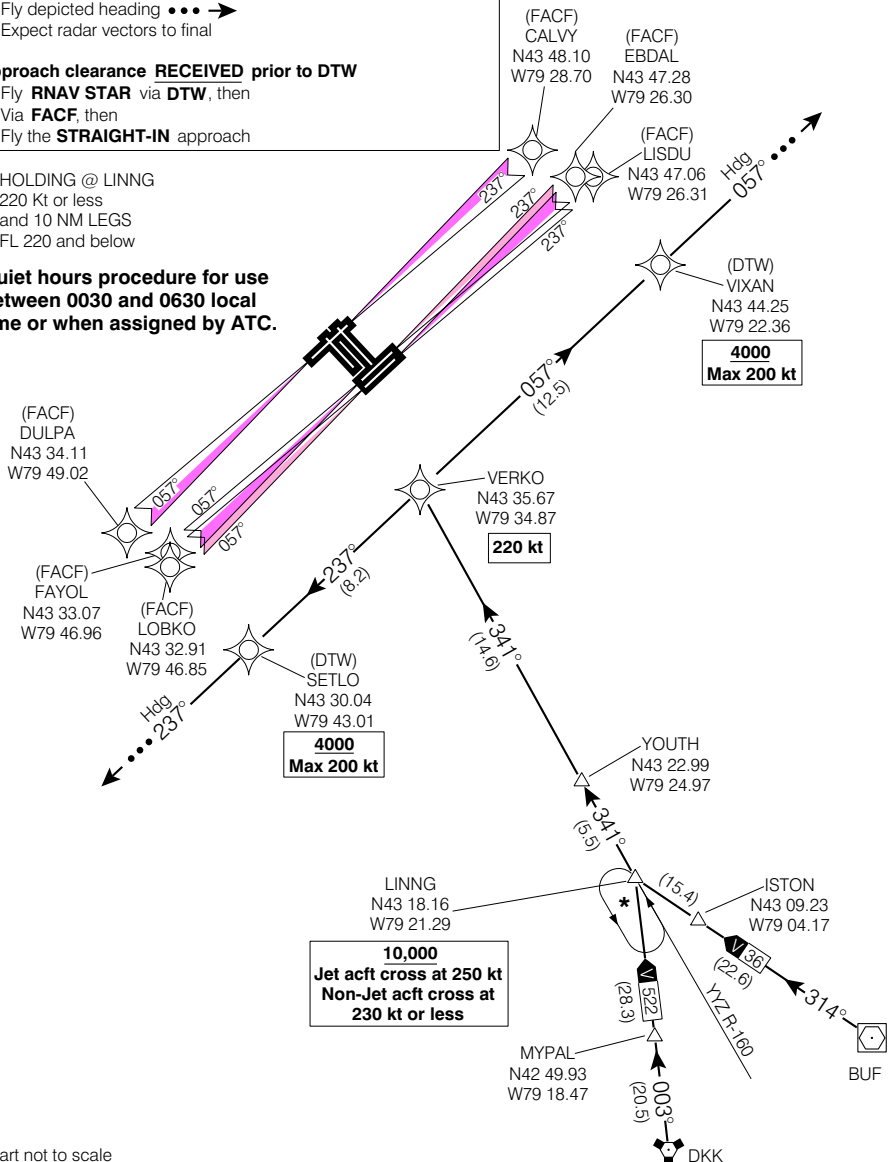


Chart not to scale

LINNG ONE ARR (LINNG. LINNG 1)

VAR 10° W (2000)

TORONTO ON

EFF 16 FEB 06

CHANGE: Editorial

TORONTO/LESTER B. PEARSON INTL

NAD83