

SID (VECTOR)  
**LESTER SEVEN DEP (LEST 7.)**

TORONTO/LESTER B. PEARSON INTL  
 TORONTO ON

**ATIS 112.15 120.825**  
**CLNC DEL 121.3**  
**GND 118.0 119.1 121.9 121.65 275.8**  
**TORONTO TWR 118.7 118.35 236.6**  
**DEP 128.8 127.575 363.8**

| TURBO-JET/FAN AIRCRAFT ONLY |         |
|-----------------------------|---------|
| RWY                         | VNAP    |
| ALL RWYS                    | *A or B |

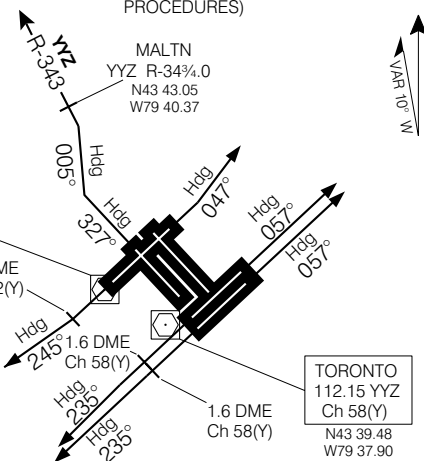
\* (see CAP GEN NOISE ABATEMENT PROCEDURES)

**UNLESS OTHERWISE ASSIGNED BY ATC:  
 JET ACFT MAINTAIN 5000' ASL.  
 NON-JET ACFT MAINTAIN 3000' ASL.**

DO NOT EXCEED 250K  
 UNTIL ABOVE 10,000' ASL.

PEARSON  
 116.55 YTP  
 Ch 112(Y)  
 N43 40.30  
 W79 39.85

1.9 DME  
 Ch 112(Y)



**CAUTION:**

RWY 05, 06L, 06R, 24L, 24R, 23 DEPARTURES:  
 Simultaneous parallel departures in use.

Chart not to scale

**DEPARTURE ROUTE DESCRIPTION**

Unless otherwise assigned by ATC:

- Rwy 05:** Climb hdg 057°. At 1000' ASL turn left hdg 047° or assigned hdg for vectors to assigned route. Maintain: 5000' ASL jet acft , 3000' ASL non-jet acft.
- Rwy 06L:** Climb hdg 057° or assigned hdg for vectors to assigned route. Maintain: 5000' ASL jet acft , 3000' ASL non-jet acft.
- Rwy 06R:** Climb hdg 057° or assigned hdg for vectors to assigned route. Maintain: 5000' ASL jet acft, 3000' ASL non-jet acft.
- Rwy 24L:** Climb hdg 237°. At 1.6 DME Ch 58(Y) turn left hdg 235° or assigned hdg for vectors to assigned route. Maintain: 5000' ASL jet acft, 3000' ASL non-jet acft.
- Rwy 24R:** Climb hdg 237°. At 1.6 DME Ch 58(Y) turn left hdg 235° or assigned hdg for vectors to assigned route. Maintain: 5000' ASL jet acft, 3000' ASL non-jet acft.
- Rwy 23:** Climb hdg 237°. At 1.9 DME Ch 112(Y) turn right hdg 245° or assigned hdg for vectors to assigned route. Maintain: 5000' ASL jet acft , 3000' ASL non-jet acft.
- Rwy 33L:** Climb rwy hdg 327° to 1100' ASL. Turn right hdg 005° to intercept YYZ R-343 outbound. Track YYZ R-343 outbound for vectors to assigned route. Maintain: 5000' ASL jet acft , 3000' ASL non-jet acft.

**NOTE:**

Rwys 05, 06L, 06R, 23, 24L, 24R departures: for noise abatement no unauthorized turns below 3600' ASL, except as described in Noise Abatement Procedures Section D. 1 d).  
 Rwy 33L departure: for noise abatement no unauthorized turns below 3600' ASL nor prior to MALTN INTXN.  
 Non-jet aircraft commence turn assigned at take-off at 1100' ASL (0700-2300 local).

**COMMUNICATIONS FAILURE**

On recognition of a failure 20 minutes or less after take-off and in IFR weather conditions proceed as follows:

1. Transponder Mode A/3 7600;
2. Beyond 10 DME YYZ proceed directly on course;
3. Do not climb above last assigned altitude for 5 minutes after recognition of failure, then;
4. Climb to flight plan altitude.

**LESTER SEVEN DEP (LEST 7.)**

EFF 16 FEB 06

CHANGE: Editorial

TORONTO ON  
 TORONTO/LESTER B. PEARSON INTL

NAD83