

ILS RWY 23

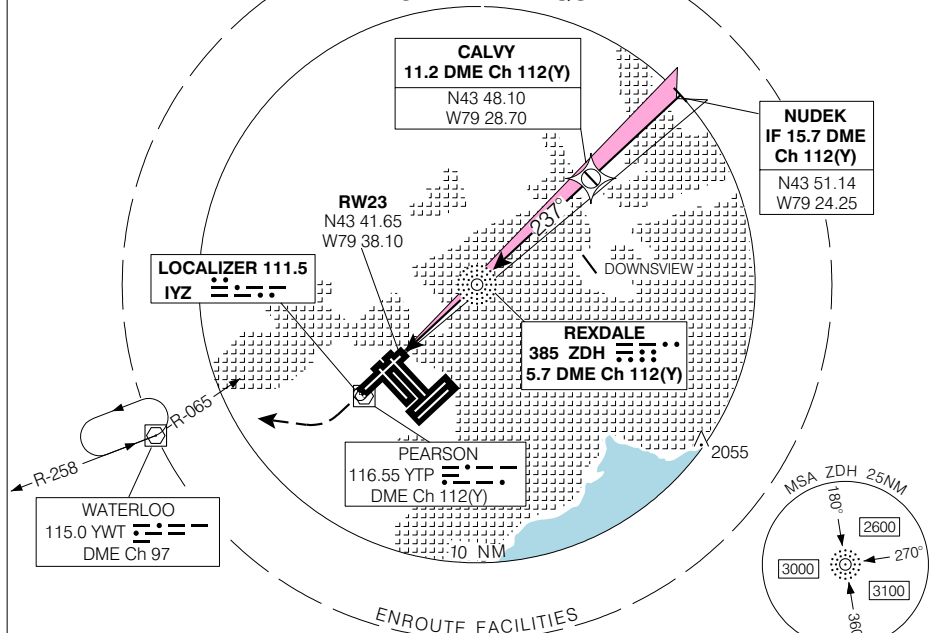
TORONTO/LESTER B. PEARSON INTL
TORONTO ON

ATIS 112.15 120.825	ARR 124.475 125.4 132.8 358.1	TORONTO TWR 118.7 118.35 236.6	GND 118.0 119.1 121.9 121.65 275.8	DEP 128.8 127.575 363.8	ELEV 569 TDZE 23 558
----------------------------------	--	---	---	--------------------------------------	---------------------------------------

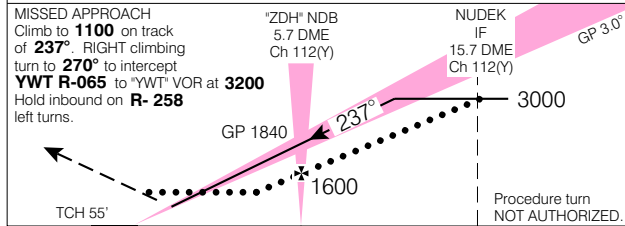
CYYZ

SIMULTANEOUS APPROACH
Simultaneous ILS approach
authorized with RWY 24R and 24L.

RADAR OR RNAV REQUIRED

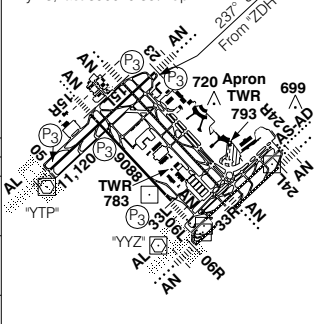


SAFE ALT 100 NM 4900



TDZL Rwy 06L, 24R
Rwy 15L-33R 11,050 x 200
Rwy 06L-24R 9697 x 200
Rwy 06R-24L 9000 x 200
Rwy 23, last 3900' 0.35% up.

CATEGORY	A	B	C	D
ILS	758	(200)	½ RVR 26	
LOC	1000	(442)	1 RVR 50	
CIRCLING	1120	(551) 1 ¼	1120	1180
			(551) 2	(611) 2



Rwys 06L, 06R, 24L, 24R, 33R - (P3)
"ZDH" NDB to MAP 3.7 NM
Knots 70 90 110 130 150
Min:Sec **3:10 2:28 2:01 1:42 1:29**

ILS RWY 23

EFF 13 APR 06 CHANGE: Editorial

N43 40 38 W79 37 50 VAR 10° W TORONTO ON
TORONTO/LESTER B. PEARSON INTL

NAD83 ♦