

# ILS RWY 06L

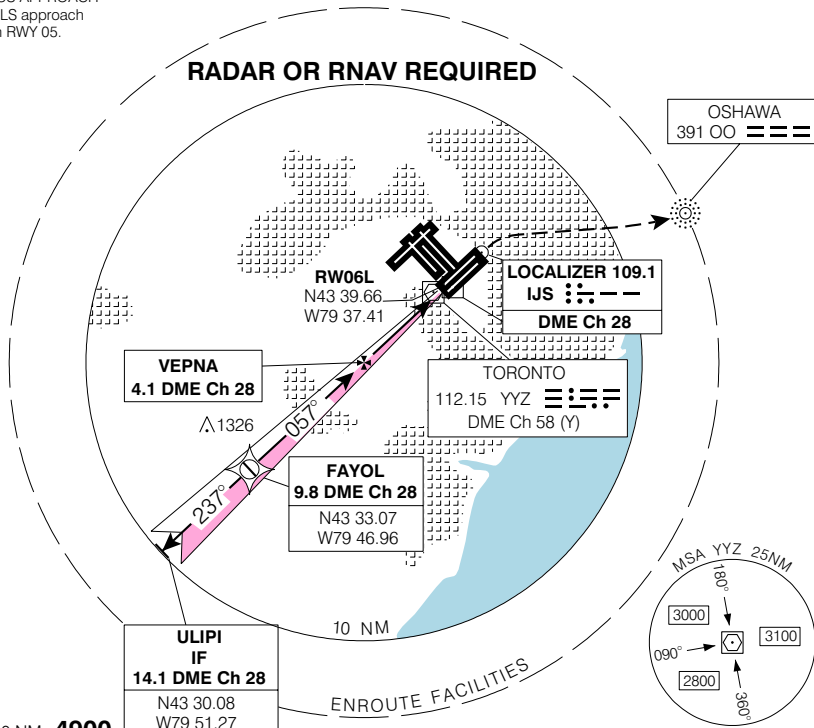
TORONTO/LESTER B. PEARSON INTL  
TORONTO ON

<b>ATIS</b> 112.15 120.825	<b>ARR</b> 124.475 125.4 132.8 358.1	<b>TORONTO TWR</b> 118.7 118.35 236.6	<b>GND</b> 118.0 119.1 121.9 121.65 275.8	<b>DEP</b> 128.8 127.575 363.8	<b>ELEV 569</b> <b>TDZE 06L 535</b>
----------------------------------	--	---	---	--------------------------------------	--

© 2006 Her Majesty The Queen in Right of Canada, Department of Natural Resources. All rights reserved

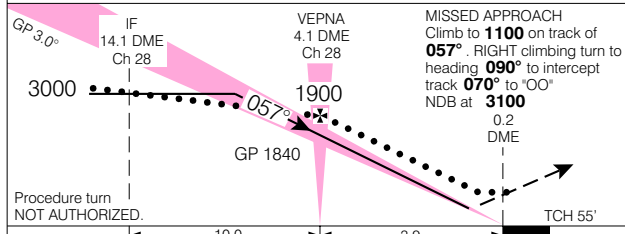
SIMULTANEOUS APPROACH  
Simultaneous ILS approach authorized with RWY 05.

CYYZ

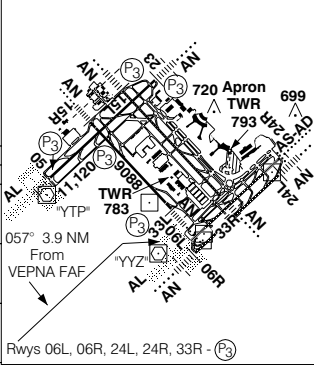


Source of Canadian Civil Aeronautical Data: © 2006 NAV CANADA. All rights reserved

SAFE ALT 100 NM **4900**



TDZL rwy 06L, 24R  
Rwy 15L-33R 11,050 x 200  
Rwy 06L-24R 9697 x 200  
Rwy 06R-24L 9000 x 200



CATEGORY	A	B	C	D
ILS	<b>735</b>	(200)	½ RVR 26	
LOC	<b>1060</b>	(525)	1 ¼	
CIRCLING	<b>1120</b>	(551) 1 ¾	<b>1120</b>	<b>1180</b>
			(551) 2	(611) 2

Knots	70	90	110	130	150
Min:Sec					

# ILS RWY 06L

EFF 16 FEB 06 CHANGE: Revised

N43 40 38 W79 37 50

VAR 10° W

TORONTO ON

TORONTO/LESTER B. PEARSON INTL

NAD83