

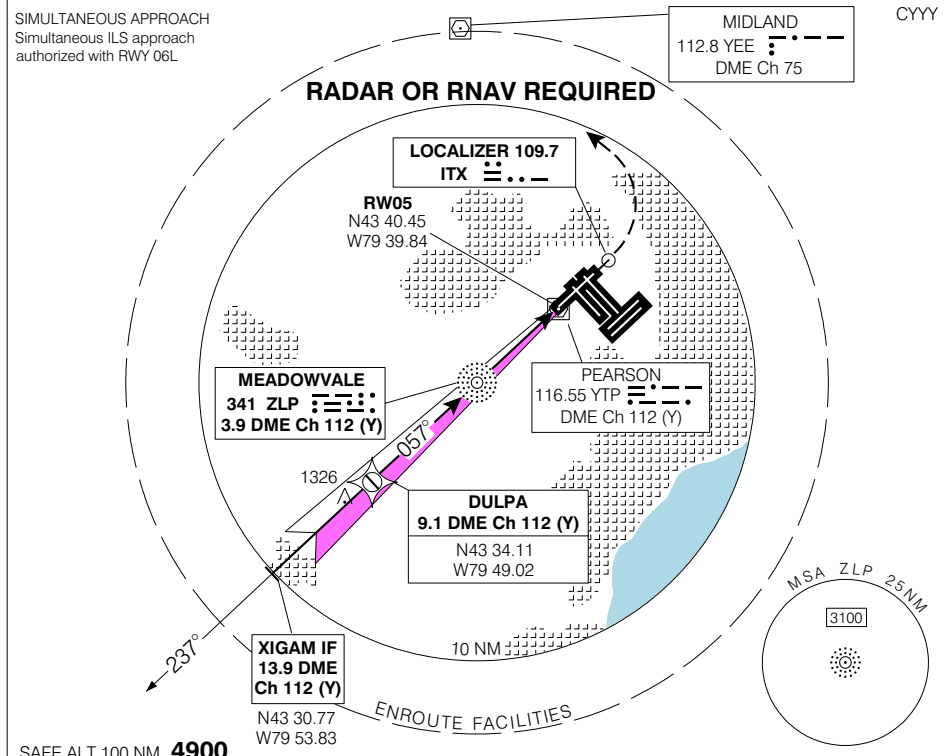
TORONTO/LESTER B. PEARSON INTL

TORONTO ON

ILS RWY 05

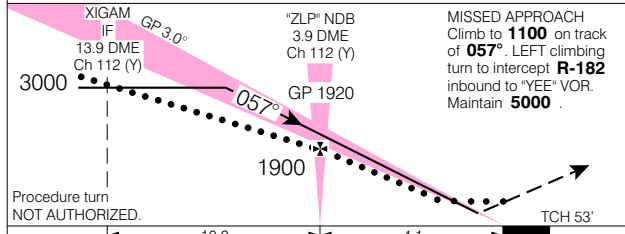
ATIS 112.15 120.825	ARR 124.475 125.4 132.8 358.1	TORONTO TWR 118.7 118.35 236.6	GND 118.0 119.1 121.9 121.65 275.8	DEP 128.8 127.575 363.8	ELEV 569 TDZE 05 564
----------------------------------	--	---	---	--------------------------------------	---------------------------------------

© 2006 Her Majesty The Queen in Right of Canada, Department of Natural Resources All rights reserved



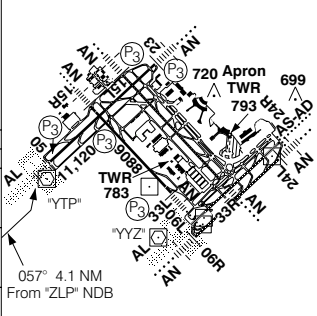
Source of Canadian Civil Aeronautical Data: © 2006 NAV CANADA All rights reserved

SAFE ALT 100 NM **4900**



TDZL Rwy 06L, 24R
Rwy 05 first 3900' down 0.35%
Rwy 15L-33R 11,050 x 200
Rwy 06L-24R 9697 x 200
Rwy 06R-24L 9000 x 200

CATEGORY	A	B	C	D
ILS	764	(200)	½ RVR 26	
LOC	1100	(536)	1 ¼	
CIRCLING	1120	(551)	1 ¼	1120 2 (611)
				1180 2



Rwys 06L, 06R, 24L, 24R, 33R - P3

ZLP NDB to MAP 4.1 NM

Knots	70	90	110	130	150
Min:Sec	3:31	2:44	2:14	1:54	1:38

ILS RWY 05

EFF 16 FEB 06

CHANGE: Revised

N43 40 38 W79 37 50

VAR 10° W

TORONTO ON

TORONTO/LESTER B. PEARSON INTL

NAD83