

SID (VECTOR)

ST. JOHN'S TWO DEP (CYT 2.)

ST. JOHN'S INTL NEWFOUNDLAND
ST. JOHN'S NL

VOT 114.8
ATIS 128.0 293.8
GND 121.9 275.8
TWR 120.6 236.6
DEP GANDER CENTRE
133.15 227.3

CLIMB TO AND MAINTAIN 5000' ASL

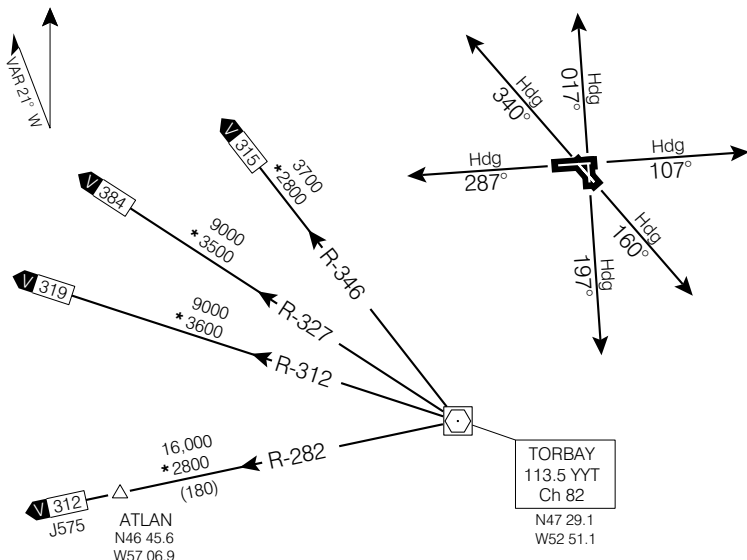


Chart not to scale

DEPARTURE ROUTE DESCRIPTION

Rwys 02, 11, 16, 29 and 34: 1. Climb rwy hdg for vectors.
2. Maintain 5000' ASL or as assigned.

Rwy 20: Requires minimum climb gradient of 270 ft/NM to 900' ASL BPOC or SPEC VIS, visual climb to 900' ASL BPOC.
1. Climb rwy hdg for vectors.
2. Maintain 5000' ASL or as assigned.

COMMUNICATION FAILURE - TRANSPONDER MODE A/3 CODE 7600

On recognition of communication failure 10 minutes or less after take-off and in IFR weather conditions proceed as follows:

1. Upon reaching last assigned altitude proceed directly on course;
2. Maintain last assigned altitude for 10 minutes after take-off; then
3. Climb to flight planned altitude, except in the case of Trans Atlantic departures, climb to the altitude specified in the Oceanic Clearance.

Note: If communication failure occurs more than 10 minutes after take-off, comply with the appropriate procedure for communication failure enroute.

ST. JOHN'S TWO DEP (CYT 2.)

EFF 13 APR 06 CHANGE: Editorial

ST. JOHN'S NL
ST. JOHN'S INTL NEWFOUNDLAND
NAD83