

STAR (RNAV)
SPEAR FIVE ARR (ULEKO, SPEAR 5)

ST. JOHN'S INTL NEWFOUNDLAND
ST. JOHN'S NL

ATIS	128.0	293.8
ARR	133.15	227.3
TWR	120.6	236.6
GND	121.9	275.8

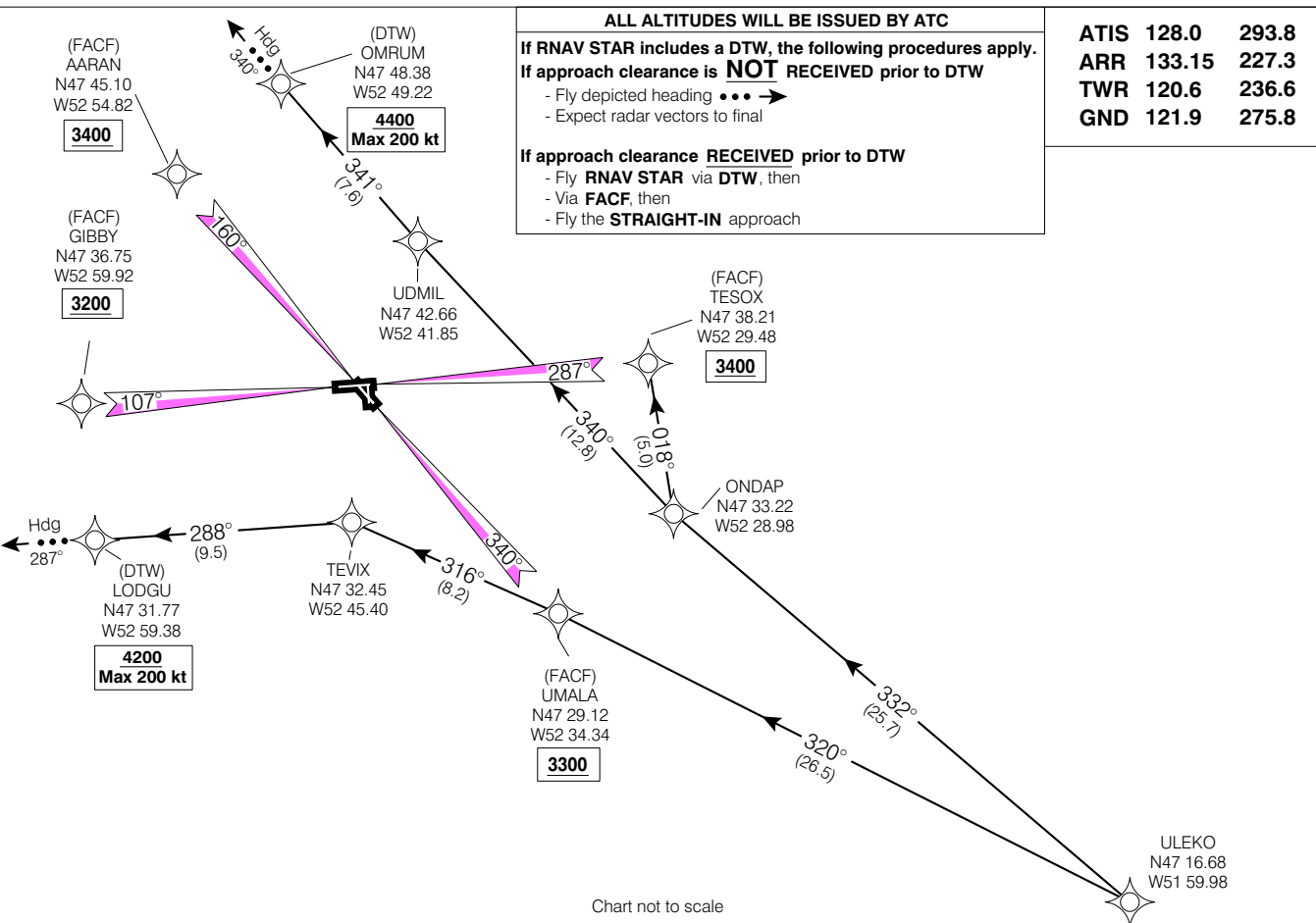
ALL ALTITUDES WILL BE ISSUED BY ATC

If RNAV STAR includes a DTW, the following procedures apply.
If approach clearance is NOT RECEIVED prior to DTW

- Fly depicted heading ●●● →
- Expect radar vectors to final

If approach clearance RECEIVED prior to DTW

- Fly **RNAV STAR** via **DTW**, then
- Via **FACF**, then
- Fly the **STRAIGHT-IN** approach



© 2006 Her Majesty The Queen in Right of Canada, Department of Natural Resources All rights reserved
 Source of Canadian Civil Aeronautical Data: © 2006 NAV CANADA All rights reserved

SPEAR FIVE ARR (ULEKO, SPEAR 5)
EFF 13 APR 06 CHANGE: Editorial

ST. JOHN'S NL
ST. JOHN'S INTL NEWFOUNDLAND
VAR 21° W (2003)