

ST. JOHN'S INTL NEWFOUNDLAND

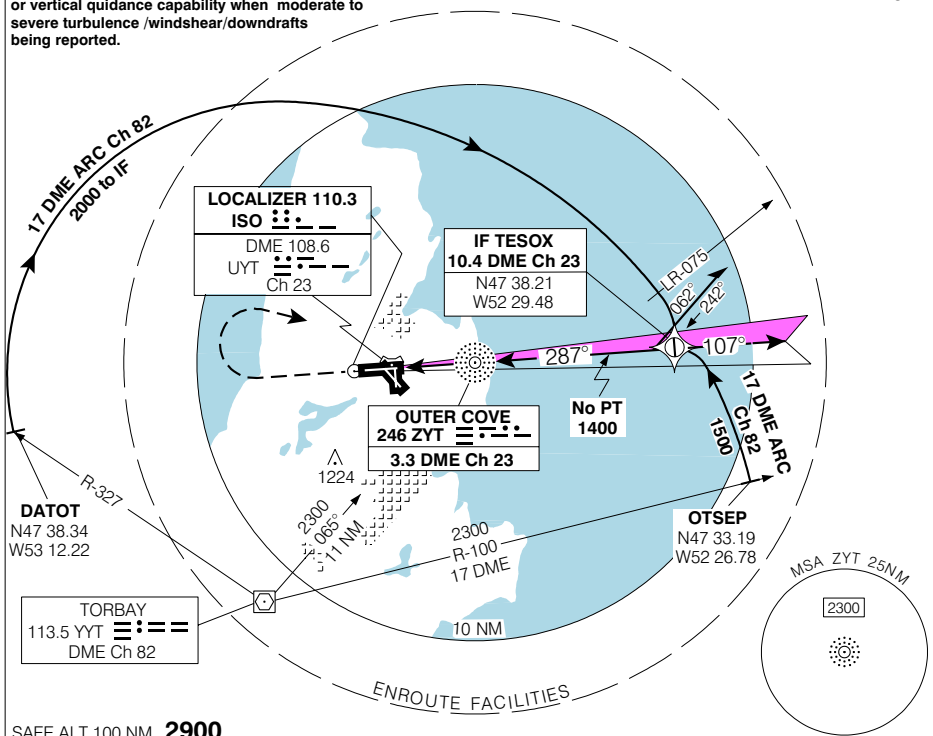
ST. JOHN'S NL

ILS CAT II RWY 29

ATIS 128.0 293.8	ARR/DEP GANDER CENTRE 133.15 227.3	TWR 120.6 236.6	GND 121.9 275.8	ELEV <b>461</b> TDZE 29 <b>449</b>
------------------------	--	-----------------------	-----------------------	---------------------------------------

Approach not authorized without electronic GP or vertical guidance capability when moderate to severe turbulence /windshear/downdrafts being reported.

CYYT

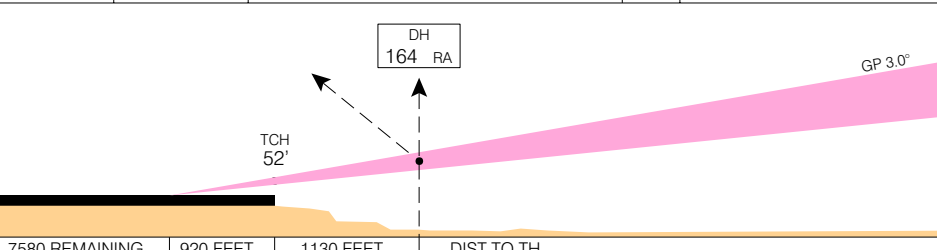
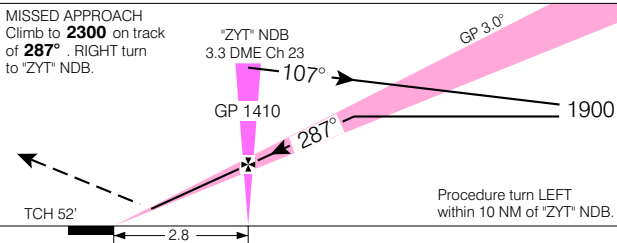


SAFE ALT 100 NM **2900**

MISSED APPROACH  
Climb to **2300** on track of **287°**. RIGHT turn to 'ZYT' NDB.

PRIOR AUTH REQUIRED FROM TC

CAT II **549** (100) RVR 12



ILS CAT II RWY 29

EFF 13 APR 06 CHANGE: Editorial

N47 37 07 W52 45 09 VAR 21° W

ST. JOHN'S INTL NEWFOUNDLAND

ST. JOHN'S NL

NAD83