

SID (PILOT NAV) COPTER ONLY

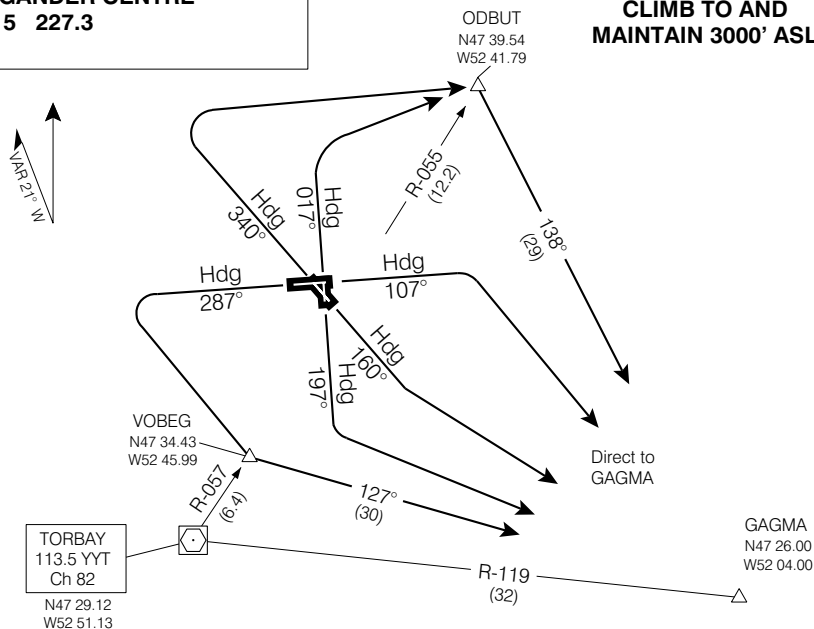
ST. JOHN'S INTL NEWFOUNDLAND
ST. JOHN'S NL

GAGMA ONE DEP (GAGMA 1.)

(FOR HELICOPTER USE ONLY)

VOT 114.8
ATIS 128.0 293.8
GND 121.9 275.8
TWR 120.6 236.6
DEP GANDER CENTRE
133.15 227.3

CLIMB TO AND MAINTAIN 3000' ASL



DEPARTURE ROUTE DESCRIPTION

Unless otherwise assigned by ATC:

- Rwys 02, 34: Climb rwy hdg to 900', climbing right turn to ODBUT, then direct to GAGMA. Maintain 3000' ASL.
- Rwy 11: Climb rwy hdg to 900', climbing right turn direct to GAGMA. Maintain 3000' ASL.
- Rwy 16: Climb rwy hdg to 900', climbing left turn direct to GAGMA. Maintain 3000' ASL.
- Rwy 20: Requires minimum climb gradient of 270 ft/NM or SPEC VIS visual climb to 900', climbing left turn direct to GAGMA. Maintain 3000' ASL.
- Rwy 29: Climb rwy hdg to 900', climbing left turn to VOBEG, then direct to GAGMA. Maintain 3000' ASL.

COMMUNICATION FAILURE - TRANSPOND MODE A/3 CODE 7600

On recognition of communication failure 10 minutes or less after take-off and in IFR weather conditions proceed as follows:

1. Upon reaching last assigned altitude proceed directly on course;
2. Maintain last assigned altitude for 10 minutes after take-off; then
3. Climb to flight planned altitude.

Note: If communication failure occurs more than 10 minutes after take-off, comply with the appropriate procedure for communication failure enroute.

GAGMA ONE DEP (GAGMA 1.)

EFF 13 APR 06

CHANGE: Editorial

ST. JOHN'S NL
ST. JOHN'S INTL NEWFOUNDLAND
NAD83