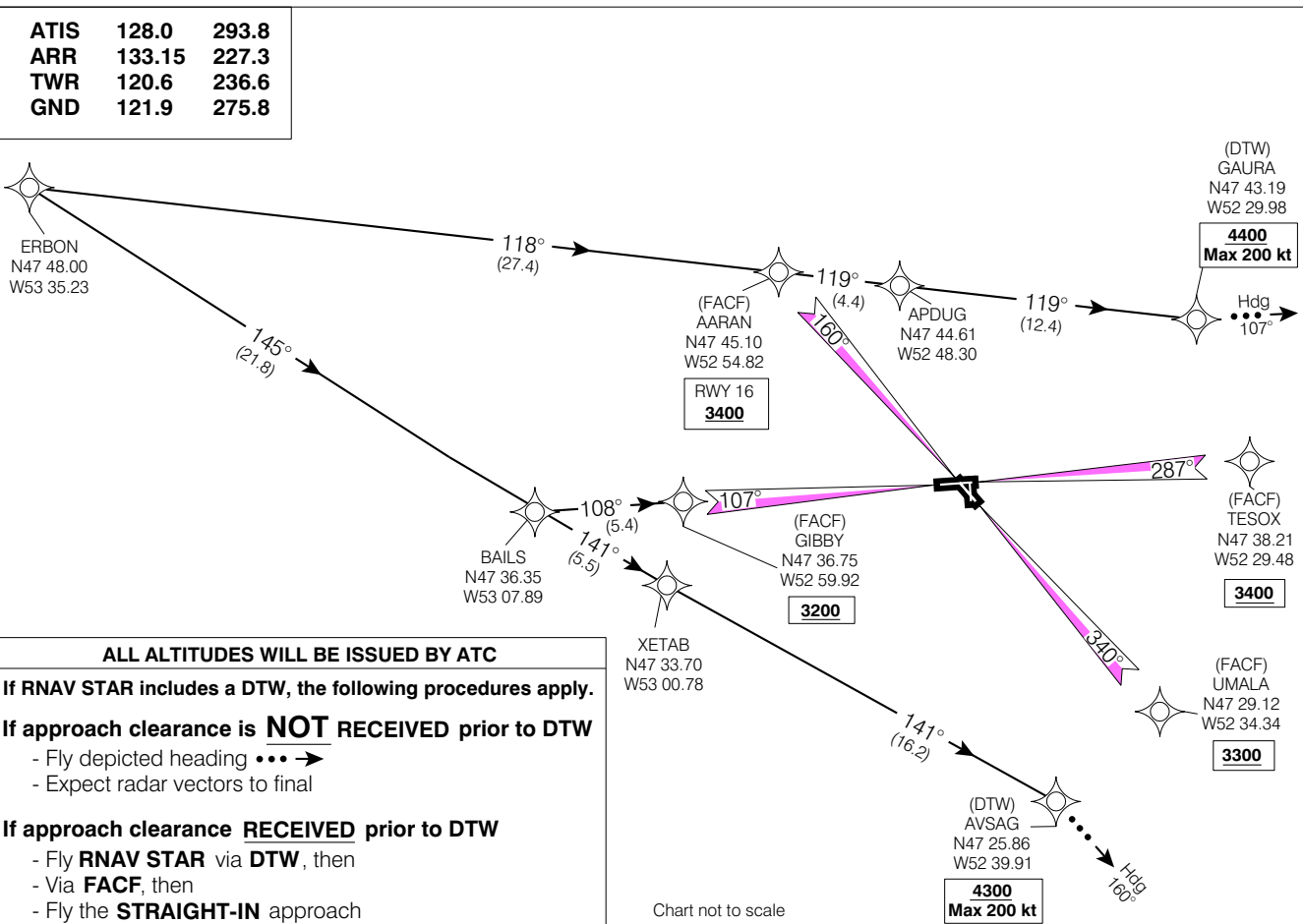


STAR (RNAV)
AVALON EIGHT ARR (ERBON, AVALN 8)

ST. JOHN'S INTL NEWFOUNDLAND
ST. JOHN'S INTL



ALL ALTITUDES WILL BE ISSUED BY ATC

If RNAV STAR includes a DTW, the following procedures apply.

If approach clearance is NOT RECEIVED prior to DTW

- Fly depicted heading ●●●→
- Expect radar vectors to final

If approach clearance RECEIVED prior to DTW

- Fly RNAV STAR via DTW, then
- Via FACF, then
- Fly the STRAIGHT-IN approach

ATIS	128.0	293.8
ARR	133.15	227.3
TWR	120.6	236.6
GND	121.9	275.8

Chart not to scale

EFF 13 APR 06
CHANGE: Editorial
AVALON EIGHT ARR (ERBON, AVALN 8)
VAR 21° W (2003)
ST. JOHN'S INTL NEWFOUNDLAND
NAD83