

SID (PILOT NAV)

MILL BAY FOUR DEP (MB4.MB)

VICTORIA INTL
VICTORIA BRITISH COLUMBIA

VOT 115.7

ATIS 118.8

● CLNC DEL 126.4

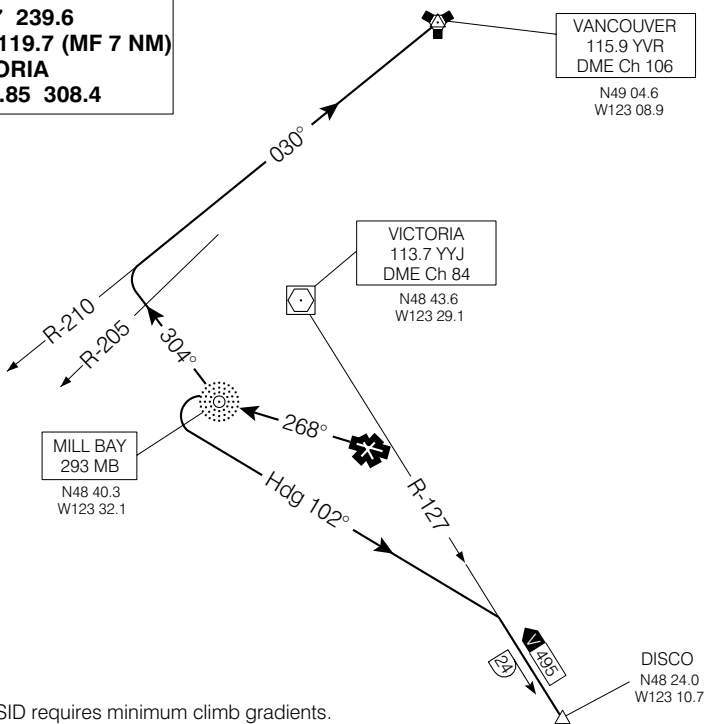
● GND 121.9 361.4

● TWR 119.7 239.6

O/T TFC 119.7 (MF 7 NM)

DEP VICTORIA

TML 133.85 308.4



NOTE: This SID requires minimum climb gradients.
Refer to route description.

Chart not to scale

DEPARTURE ROUTE DESCRIPTION

Runway 27: DISCO TRANSITION - Requires minimum climb gradient of 330 ft/NM to 3500. Climb direct "MB" NDB. Turn left to heading 102° to intercept and proceed via "YYJ" R-127 to DISCO. Contact Victoria Terminal **after passing 1000** unless instructed otherwise by ATC. Maintain 4000 or as assigned.

VANCOUVER TRANSITION - Requires minimum climb gradient of 220 ft/NM to 3500. Climb direct "MB" NDB. Turn right to track 304°, cross "YVR" R-205, turn right to intercept "YVR" R-210 and proceed to "YVR" VORTAC. Contact Victoria Terminal **after passing 1000** unless instructed otherwise by ATC. Maintain 4000 or as assigned.

All aircraft expect clearance to flight planned altitude/flight level 10 minutes after departure.

NOTE: Refer to Noise Abatement Procedures for additional requirements.

MILL BAY FOUR DEP (MB4.MB)

EFF 7 JUL 05 CHANGE: ATIS Comm box

VICTORIA BRITISH COLUMBIA
VICTORIA INTL

NAD83