

STAR

IMPOR EIGHT ARR (IMPOR:IMPOR 8)

Geomatics Canada

VICTORIA INTL  
VICTORIA BRITISH COLUMBIA

ATIS 118.8  
ARR 133.85 308.4  
● TWR 119.7 239.6  
● O/T TFC 119.7 (MF 7 NM)  
● GND 121.9 361.4

MAINTAIN ASSIGNED  
ALTITUDE UNTIL CLEARED  
FOR APPROACH

**VANCOUVER TRANSITION (YVR.IMPOR 8):**  
From **YVR VORTAC** via **YVR R-157** to **IMPOR INTXN**. Thence ...

**WHATCOM TRANSITION (HUH.IMPOR 8):**  
From **HUH VORTAC** via **HUH R-230** to **BUICK INTXN**. Thence via **YVR R-157** to **IMPOR INTXN**. Thence ...

**RWY 27**  
... From **IMPOR INTXN Hdg 222°** to **INTERCEPT** final approach course to **RWY 27**.

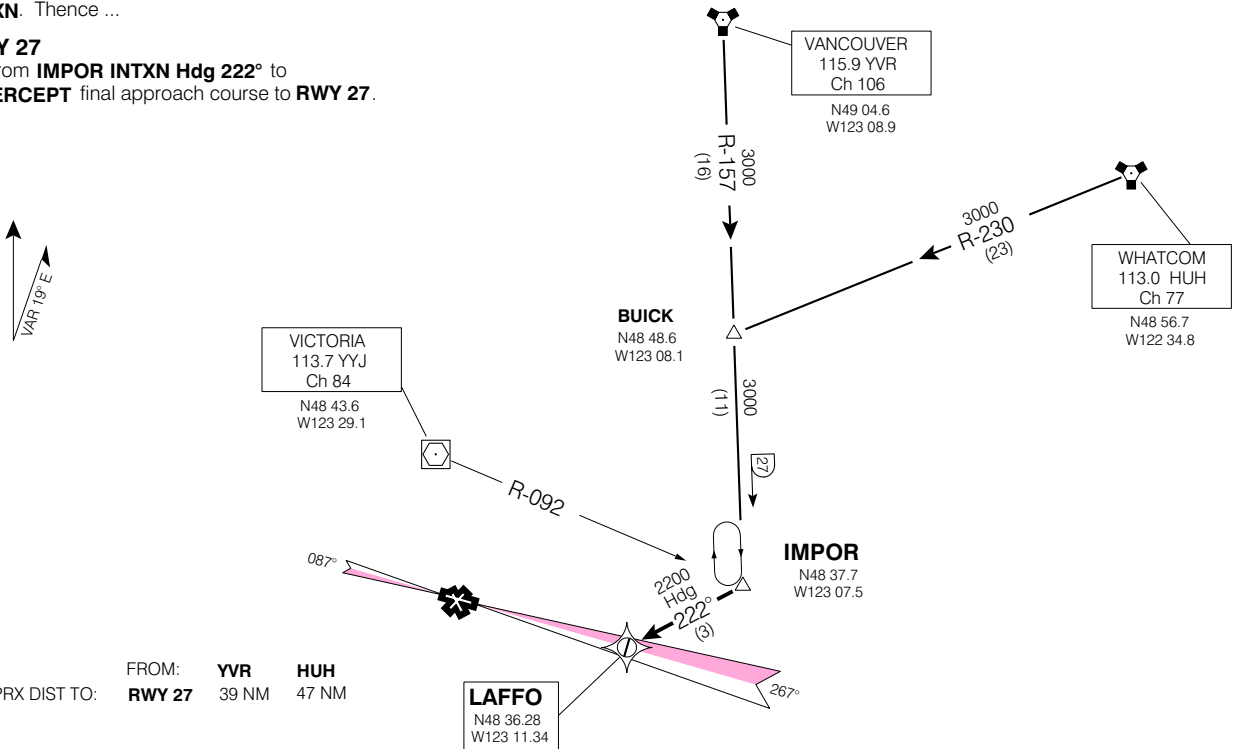


Chart not to scale

IMPOR EIGHT ARR (IMPOR:IMPOR 8)

EFF 7 JUL 05

CHANGE: ATIS Comm box

VICTORIA BRITISH COLUMBIA  
VICTORIA INTL  
NAD83