

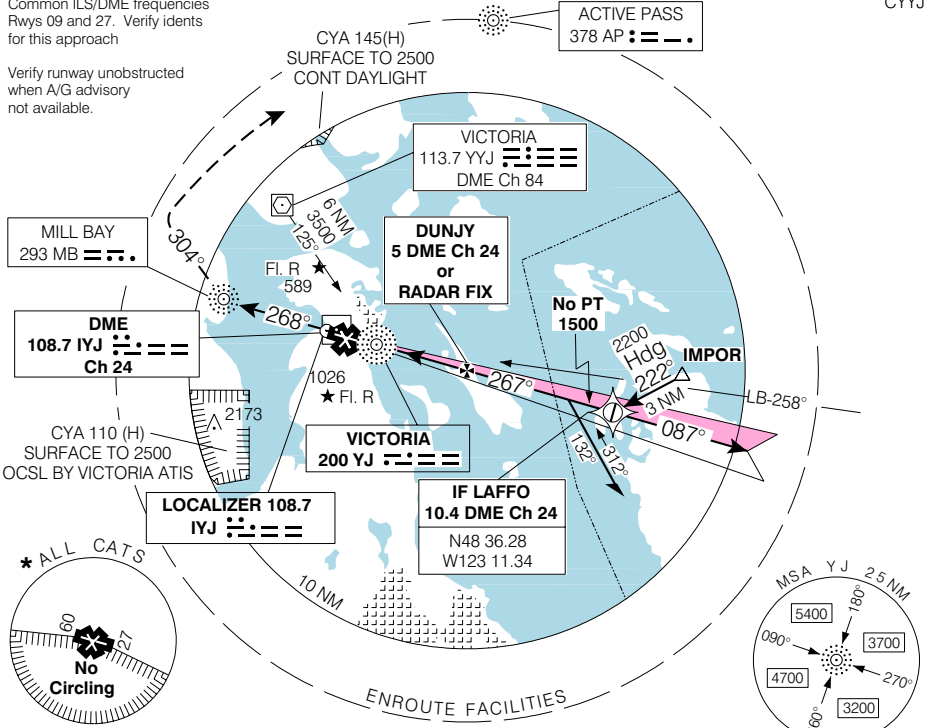
VICTORIA INTL
VICTORIA BC

ILS/DME or ILS/RADAR RWY 27

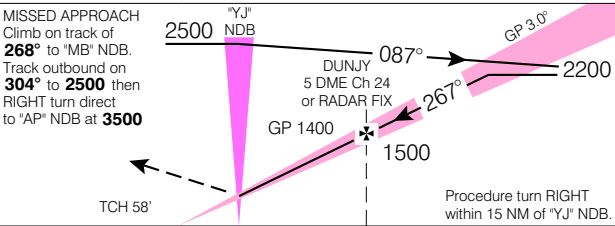
ATIS 118.8	ARR/DEP VICTORIA TERMINAL 133.85 308.4	TWR 119.7 239.6 O/T FFC 119.7 (MF 7 NM)	GND 121.9 361.4	ELEV 63 TDZE 27 57
----------------------	--	--	------------------------------	-------------------------------------

Common ILS/DME frequencies
Rwys 09 and 27. Verify idents
for this approach

Verify runway unobstructed
when A/G advisory
not available.



SAFE ALT 100 NM **12,800**



Right hand circuits Rwys 09, 20 & 31.

ARCAL 119.7 (K) (see CFS)

Rwy 09-27 7000
Rwy 02-20 5026
Rwy 13-31 5003

CATEGORY	A	B	C	D
ILS/DME ILS/RADAR	257		(200)	½ RVR 26
LOC/DME LOC/RADAR	400		(343)	1 RVR 50
* CIRCLING	580 (517)	600 (537)	660 (597)	920 (857)
	1 ½	1 ¼	2	2 ½

FAF to "YJ" NDB 3.5 NM					
Knots	70	90	110	130	150
Min:Sec	3:00	2:20	1:54	1:37	1:24

ILS/DME or ILS/RADAR RWY 27

EFF 13 APR 06 CHANGE: Rwy 09 lgt

VAR 19° E
N48 38 49 W123 25 33
VICTORIA BC
VICTORIA INTL
NAD83

© 2006 Her Majesty The Queen in Right of Canada, Department of Natural Resources. All rights reserved. Source of Canadian Civil Aeronautical Data: © 2006 NAV CANADA. All rights reserved.