



ATIS 118.8
ARR 133.85 308.4
TWR 119.7 239.6
O/T TFC 119.7 (MF 7 NM)
GND 121.9 361.4

VANCOUVER
 115.9 YVR
 Ch 106
 N49 04.6
 W123 08.9

VICTORIA
 113.7 YYJ
 Ch 84
 N48 43.6
 W123 29.1

BRANY
 N48 43.50
 W123 49.45

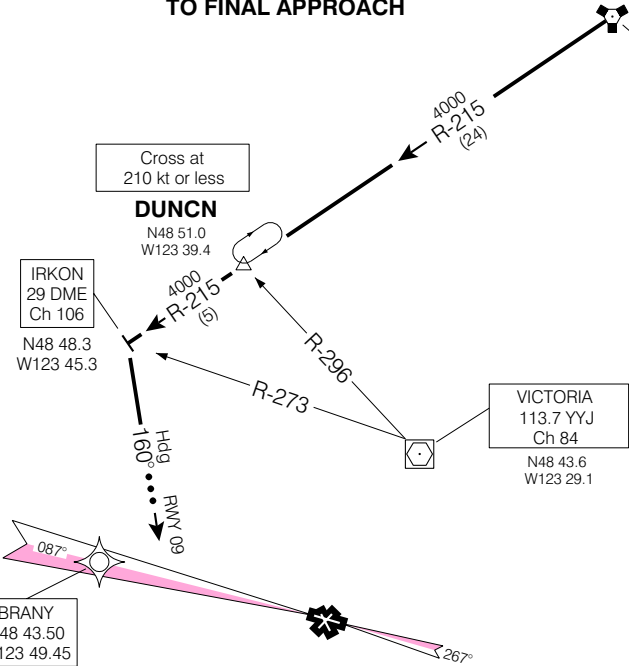
Cross at
 210 kt or less

DUNCN
 N48 51.0
 W123 39.4

IRKON
 29 DME
 Ch 106
 N48 48.3
 W123 45.3

MAINTAIN ASSIGNED ALTITUDE UNTIL CLEARED FOR APPROACH

... → EXPECT RADAR VECTORS TO FINAL APPROACH



CAUTION: MOUNTAINOUS TERRAIN RISES ABRUPTLY SOUTHWEST OF THE LOCALIZER. DO NOT FLY THROUGH THE LOCALIZER.

RWY 09
 From **YVR VORTAC** via **YVR R-215** to **29 DME**, then left turn **Hdg 160°**.
 Expect radar vectors to final approach course.
 Cross **DUNCN INTXN** at **210 kt** or less

FROM: **YVR**
 APRX DIST TO: **RWY 09** 49 NM

Chart not to scale