

VICTORIA INTL  
VICTORIA BC

AERODROME CHART

<b>VOT</b> 115.7	<b>ATIS</b> 118.8	<b>CLNC DEL</b> 126.4	<b>GND</b> 121.9 361.4	<b>TWR</b> 119.7 239.6 O/T TFC 119.7 (MF 7 NM)	<b># DEP</b> <b>VICTORIA TERMINAL</b> 133.85 308.4
---------------------	----------------------	--------------------------	------------------------------	--	--

DECLARED DISTANCES	ELEVATION					
	02	20	09	27	13	31
TORA	5026	5026	7000	7000	5003	5003
TODA	6010	5380	7984	7984	5331	5705
ASDA	5026	5026	7000	7000	5003	5003
LDA	3605	5026	7000	7000	4576	5003

# During hrs of TWR closure, ctc Victoria Tml for IFR clnc.

Twy M restricted to 12,500 lbs.

Taxi route for arriving wide-bodied acft is:

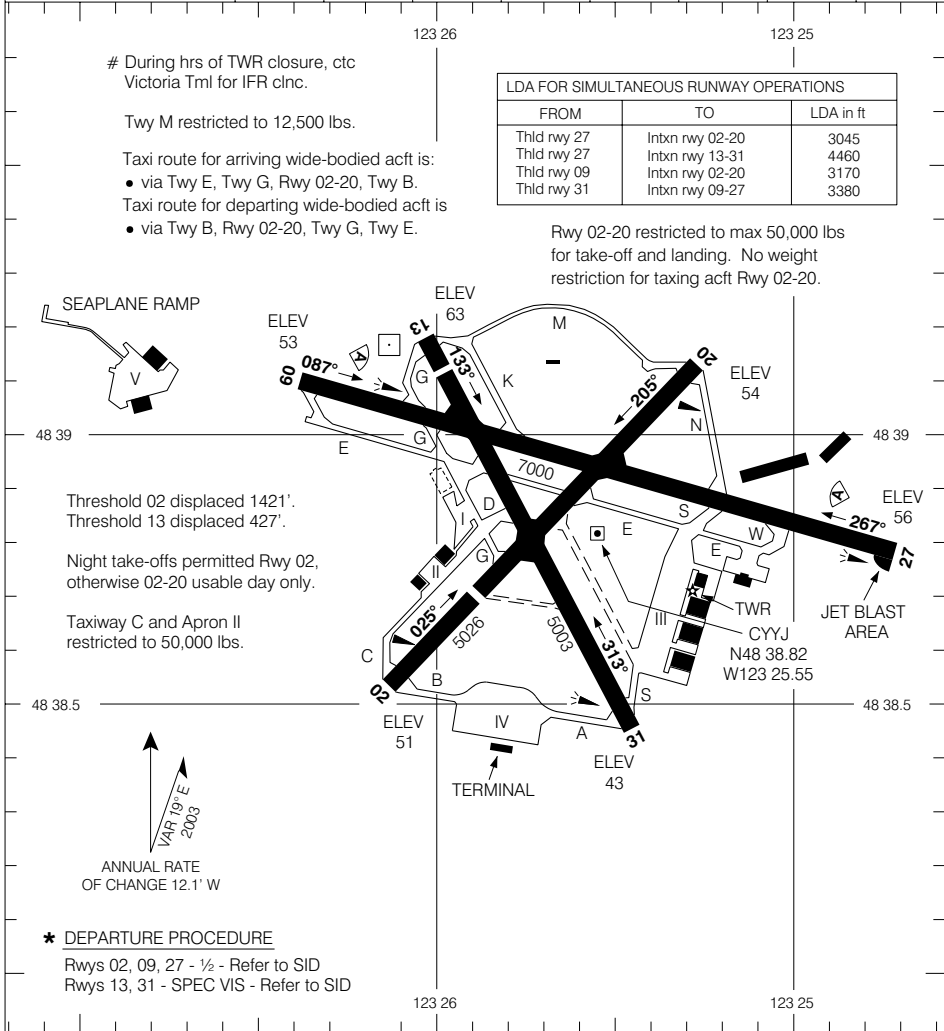
- via Twy E, Twy G, Rwy 02-20, Twy B.

Taxi route for departing wide-bodied acft is

- via Twy B, Rwy 02-20, Twy G, Twy E.

LDA FOR SIMULTANEOUS RUNWAY OPERATIONS		
FROM	TO	LDA in ft
Thld rwy 27	Intrn rwy 02-20	3045
Thld rwy 27	Intrn rwy 13-31	4460
Thld rwy 09	Intrn rwy 02-20	3170
Thld rwy 31	Intrn rwy 09-27	3380

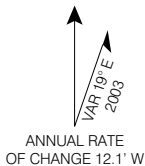
Rwy 02-20 restricted to max 50,000 lbs for take-off and landing. No weight restriction for taxing acft Rwy 02-20.



Threshold 02 displaced 1421'.  
Threshold 13 displaced 427'.

Night take-offs permitted Rwy 02, otherwise 02-20 usable day only.

Taxiway C and Apron II restricted to 50,000 lbs.



\* DEPARTURE PROCEDURE

Rwys 02, 09, 27 - 1/2 - Refer to SID  
Rwys 13, 31 - SPEC VIS - Refer to SID

TAKE-OFF MINIMA

Rwys 02; 09; 13; 27; 31: \*



AERODROME CHART

EFF 13 APR 06

CHANGE: LDA in ft

VICTORIA BC  
VICTORIA INTL  
NAD83