

STAR

VUCAN EIGHT ARR (VUCAN, VUCAN 8)



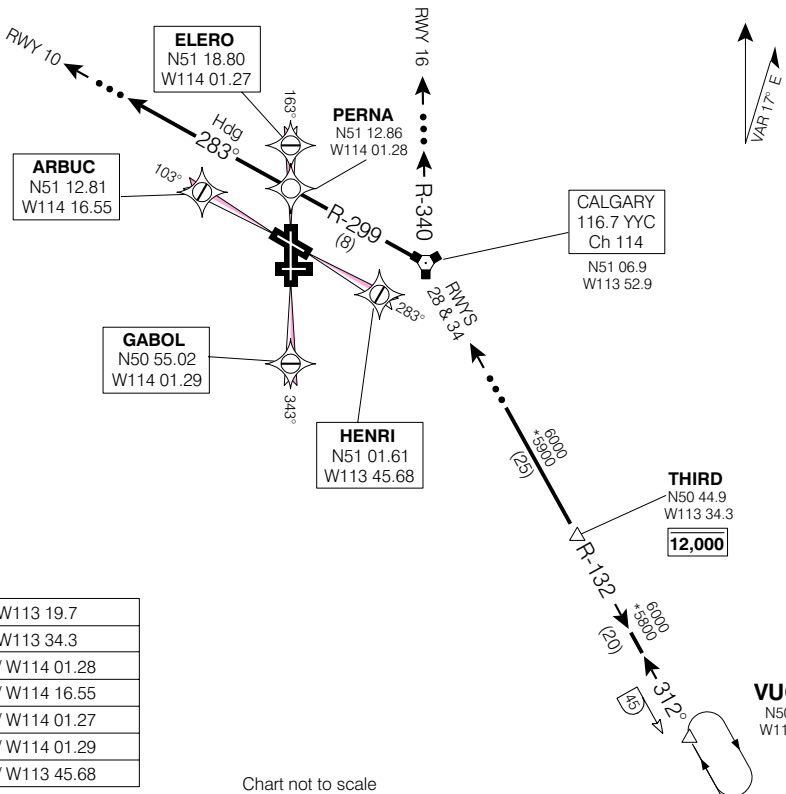
Geomatics Canada

CALGARY INTL
CALGARY ALBERTA

ATIS 114.8 127.2
ARR 125.9 283.9
TWR 118.4 236.6
GND 121.9 275.8

**MAINTAIN ASSIGNED ALTITUDE
UNTIL CLEARED FOR APPROACH**

**... ➔ EXPECT RADAR VECTORS
TO FINAL APPROACH**



RWY 10

....From **VUCAN INTXN** via **YYC R-132** then via **YYC R-299** to **PERNA** then via **Hdg 283°** Expect **RADAR VECTORS** to final approach course. Do **NOT** expect lower than **10,000'** until **West** of **YYC VORTAC**. **CROSS THIRD** at **12,000'** or below.

RWY 16

....From **VUCAN INTXN** via **YYC R-132** to **YYC VORTAC**, **INTERCEPT YYC R-340**. Expect **RADAR VECTORS** to final approach course. Do **NOT** expect lower than **10,000'** until **North** of **YYC VORTAC**. **CROSS THIRD** at **12,000'** or below.

RWYS 28 & 34

....From **VUCAN INTXN** via **YYC R-132** to **YYC VORTAC**. Expect **RADAR VECTORS** **North** of **THIRD INTXN** to final approach course. **CROSS THIRD** at **12,000'** or below.

FROM: **VUCAN**
APRX DIST TO: **RWY 10** 70 NM
RWY 16 75 NM
RWY 28 49 NM
RWY 34 52 NM

VUCAN	YYC R-132 / 45.0 DME	N50 27.2 / W113 19.7
THIRD	YYC R-132 / 25.0 DME	N50 44.9 / W113 34.3
PERNA	YYC R-299 / 8.0 DME	N51 12.86 / W114 01.28
ARBUC	YYC R-272 / 16.0 DME	N51 12.81 / W114 16.55
ELERO	YYC R-316 / 13.0 DME	N51 18.80 / W114 01.27
GABOL	YYC R-184 / 13.0 DME	N50 55.02 / W114 01.29
HENRI	YYC R-119 / 7.0 DME	N51 01.61 / W113 45.68

Chart not to scale

VUCAN EIGHT ARR (VUCAN, VUCAN 8)

CALGARY ALBERTA
CALGARY INTL
NAD83

EFFE 10 JUN 04 CHANGE: R-300 to R-299, 282° to 283°; waypoint data box

NOT FOR
NAVIGATION