

STAR

TORON THREE ARR (TORON, TORON 3)



Geomatics Canada

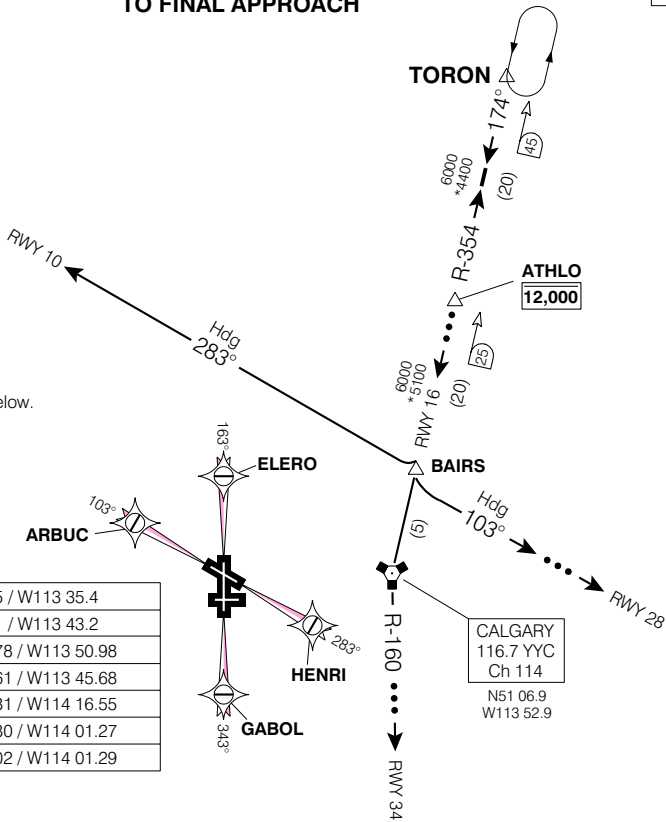
CALGARY INTL
CALGARY ALBERTA

ATIS	114.8	127.2
ARR	125.9	283.9
TWR	118.4	236.6
GND	121.9	275.8



**MAINTAIN ASSIGNED ALTITUDE
UNTIL CLEARED FOR APPROACH**

••• ➔ **EXPECT RADAR VECTORS
TO FINAL APPROACH**



RWY 10

....From **TORON INTXN** via **YYC R-354** to **BAIRS INTXN** then via **Hdg 283°**. Expect **RADAR VECTORS West of BAIRS INTXN**. Do **NOT** expect lower until **West of BAIRS INTXN**. **CROSS ATHLO** at **12,000'** or below.

RWY 16

....From **TORON INTXN** via **YYC R-354** to **YYC VORTAC**. Expect **RADAR VECTORS South of ATHLO INTXN** to final approach course. **CROSS ATHLO** at **12,000'** or below.

RWY 28

....From **TORON INTXN** via **YYC R-354** to **BAIRS INTXN** then via **Hdg 103°**. Expect **RADAR VECTORS** to final approach course. Do **NOT** expect lower than **10,000'** until **East of BAIRS**. **CROSS ATHLO** at **12,000'** or below.

RWY 34

....From **TORON INTXN** via **YYC R-354** to **YYC VORTAC, INTERCEPT YYC R-160**. Expect **RADAR VECTORS** to final approach course. Do **NOT** expect lower than **10,000'** until **South of BAIRS**. **CROSS ATHLO** at **12,000'** or below.

FROM: **TORON**

APRX DIST TO: **RWY 10** 59 NM
RWY 16 48 NM
RWY 28 65 NM
RWY 34 76 NM

TORON	YYC R-354 / 45.0 DME	N51 50.5 / W113 35.4
ATHLO	YYC R-354 / 25.0 DME	N51 31.1 / W113 43.2
BAIRS	YYC R-354 / 5.0 DME	N51 11.78 / W113 50.98
HENRI	YYC R-119 / 7.0 DME	N51 01.61 / W113 45.68
ARBUC	YYC R-272 / 16.0 DME	N51 12.81 / W114 16.55
ELERO	YYC R-316 / 13.0 DME	N51 18.80 / W114 01.27
GABOL	YYC R-184 / 13.0 DME	N50 55.02 / W114 01.29

TORON THREE ARR (TORON, TORON 3)

CHANGE: 102° to 103°

CALGARY ALBERTA
CALGARY INTL
NAD83

Chart not to scale