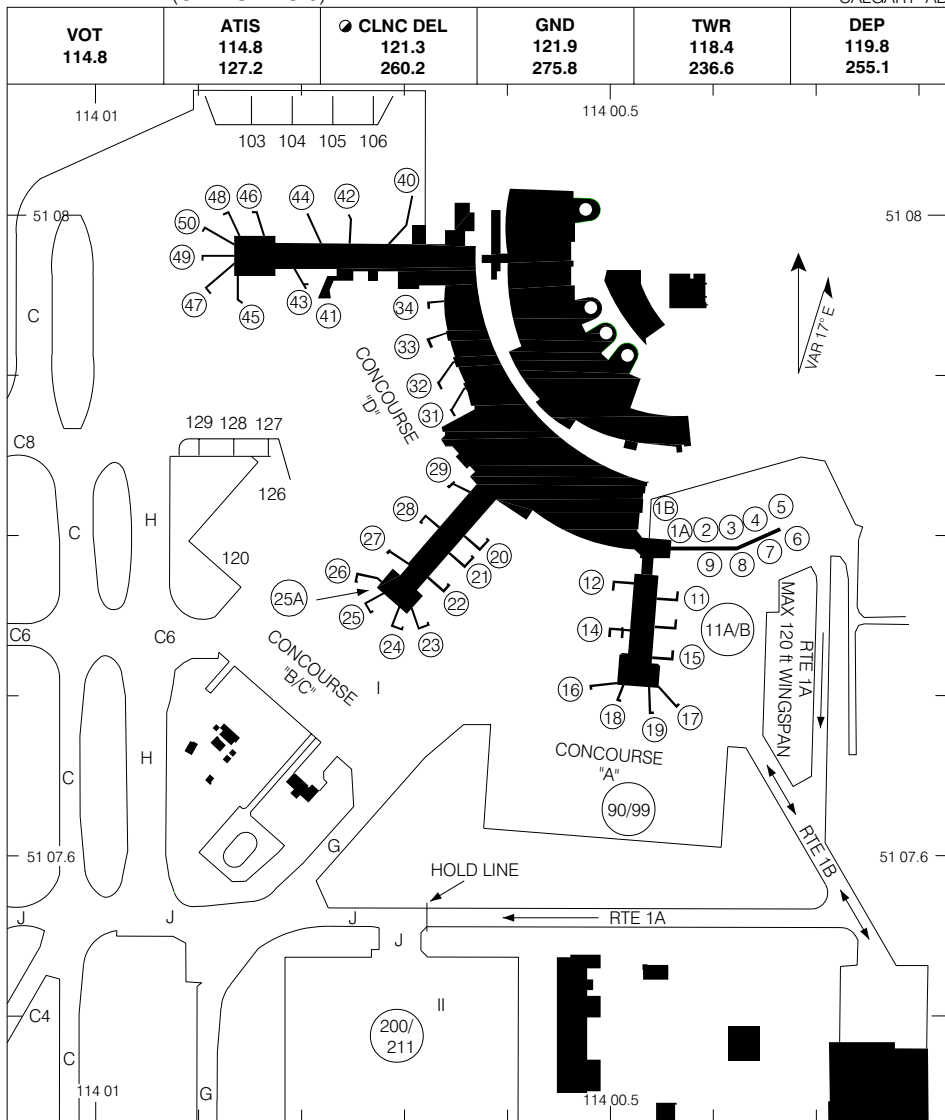


TAXI CHART (GATES 1 TO 9)

CALGARY INTL
CALGARY AB



Apron 1 Exit Routing Procedure
(see chart below)

Route Ident	Routing
RTE 1A	Available for acct utilizing Gates 1-9 as directed by ATC. RTE 1A is one-way only for acct exiting Apron I proceeding to Twy J. That portion of RTE 1A north of RTE 1B is restricted to Code C acct or acct with a maximum of 120 ft wingspan. Caution: 1. Converging traffic with RTE 1B. 2. Cargo vehicles may be crossing route.
RTE 1B	RTE 1B connects to RTE 1A for traffic exiting Apron I proceeding to TWY J. Caution: 1. Converging traffic with RTE 1A.

TAXI CHART (GATES 1 TO 9)

CHANGE: Positions 120 to 129; Rte 1A info

CALGARY AB
CALGARY INTL
NAD83

EFF 13 APR 06

© 2006 Her Majesty The Queen in Right of Canada, Department of Natural Resources. All rights reserved. Source of Canadian Civil Aeronautical Data: © 2006 NAV CANADA. All rights reserved.