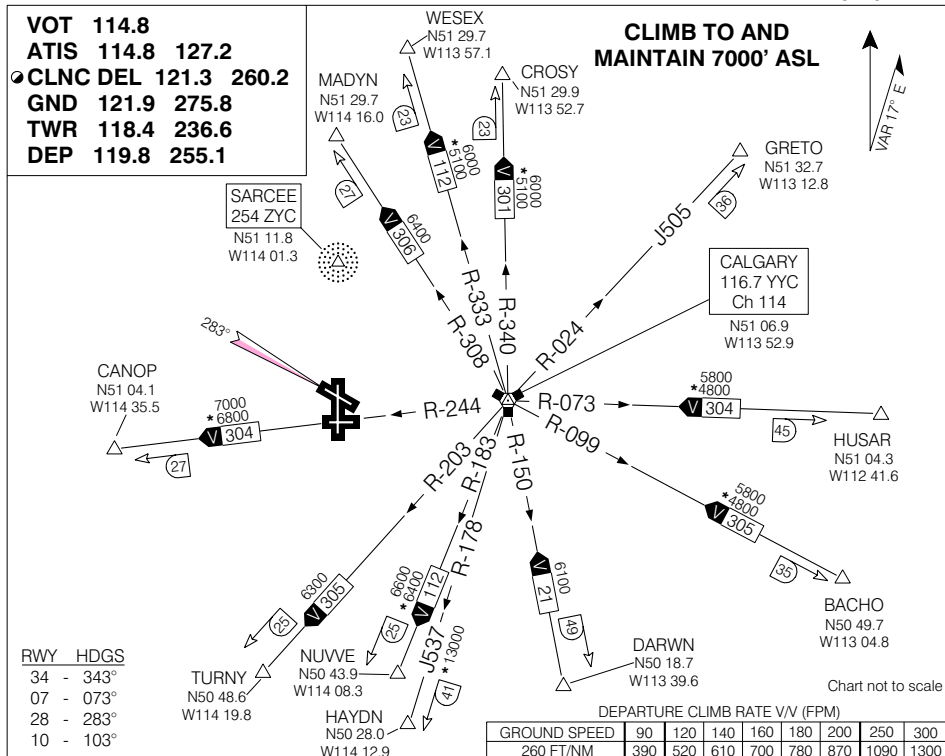


SID (VECTOR) JET AIRCRAFT
STAMPEDE ONE DEP (STAM1.)

CALGARY INTL
CALGARY AB



DEPARTURE ROUTE DESCRIPTION

- All rwys:** Climb to and maintain 7000' ASL for vectors to assigned route or depicted fix.
- Rwys 07, 10:** Climb rwy hdg or as assigned for vectors. No turns below 6500'.
- Rwy 16:** Climb rwy hdg for vectors. No turns below 6500'.
- Rwy 25:** Auth for Jet acct with max gross take-off weight less than 44,100 lbs. Clb rwy hdg for vectors, no turns below 6500 ft ASL. Clb gradient of 260 FT/NM to 4900' required.
- Rwy 28:** Climb on the LOC 283° for vectors, no turns below 6500" ASL.
- Rwy 34:** Clb rwy hdg or as assigned for vectors. No left turns below 6500' south of "SARCEE" NDB.

NOTE: Refer to Noise Abatement Procedures for additional requirements.

COMMUNICATION FAILURE

On recognition of failure 10 minutes or less after take-off and in IFR weather conditions, proceed as follows:

1. Transponder 7600;
2. Upon reaching last assigned altitude proceed directly on course;
3. Maintain last assigned altitude for 10 minutes *after take-off; then,
4. Climb to flight planned altitude.

* West and Southwest bound flights - Proceed to the first enroute intxn at last assigned or acknowledged altitude, then shuttle climb to MEA BPOC.

NOTE: If communication failure occurs more than 10 minutes after take-off, comply with the appropriate procedure for communication failure enroute.

STAMPEDE ONE DEP (STAM1.)

CALGARY AB
CALGARY INTL

EFF 13 APR 06 CHANGE: "ZCA" NDB removed

NAD83