



RWYS 10 & 16

....From **OPALE INTXN** via **YYC R-230** to **MOGOT INTXN** then via **Hdg 343°**. Expect **RADAR VECTORS** to final approach course. Do **NOT** expect lower than **10,000'** until **North of MOGOT. CROSS HANDA at 14,000'** or below.

RWY 28

....From **OPALE INTXN** via **YYC R-230** to **MOGOT INTXN** then via **Hdg 103°**. Expect **RADAR VECTORS** to final approach course. Do **NOT** expect lower than **10,000'** until **East of MOGOT. CROSS HANDA at 14,000'** or below.

RWY 34

....From **OPALE INTXN** via **YYC R-230** to **HANSI INTXN** then via **Hdg 163°**. Expect **RADAR VECTORS** to final approach course. Do **NOT** expect lower than **10,000'** until **East of HANSI. CROSS HANDA at 14,000'** or below.

FROM:	OPALE
APRX DIST TO:	
RWY 10	50 NM
RWY 16	65 NM
RWY 28	69 NM
RWY 34	56 NM

OPALE	YYC R-230 / 45.0 DME	N50 51.2 / W114 59.6
HANDA	YYC R-230 / 37.0 DME	N50 54.0 / W114 47.8
ALBRO	YYC R-230 / 29.0 DME	N50 56.8 / W114 36.0
HANSI	YYC R-230 / 17.0 DME	N51 01.1 / W114 18.2
MOGOT	YYC R-230 / 13.0 DME	N51 02.4 / W114 12.2
HENRI	YYC R-119 / 7.0 DME	N51 01.61 / W113 45.68
ARBUC	YYC R-272 / 16.0 DME	N51 12.81 / W114 16.55
ELERO	YYC R-316 / 13.0 DME	N51 18.80 / W114 01.27
GABOL	YYC R-184 / 13.0 DME	N50 55.02 / W114 01.29

MAINTAIN ASSIGNED ALTITUDE UNTIL CLEARED FOR APPROACH

••• → **EXPECT RADAR VECTORS TO FINAL APPROACH**

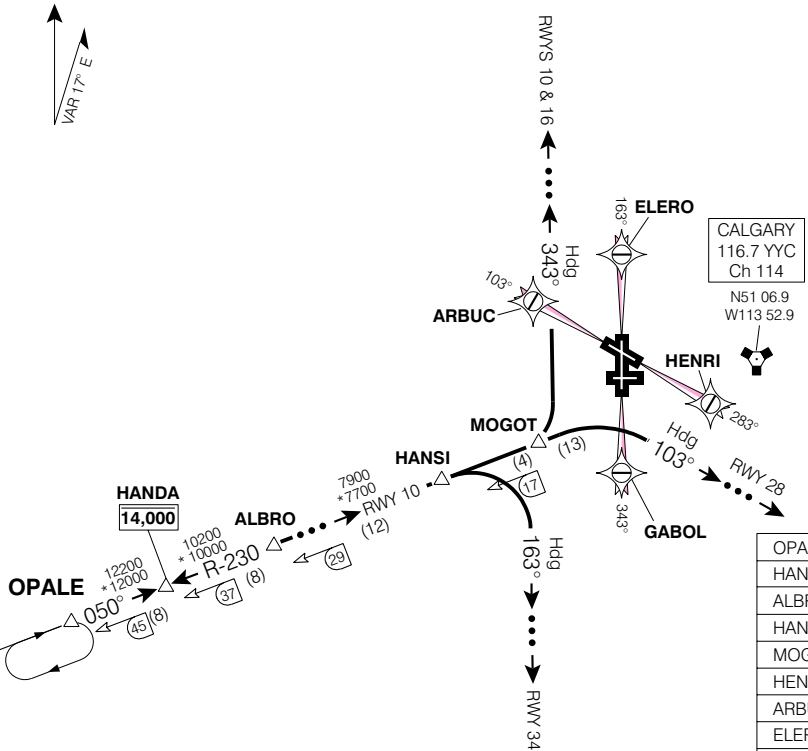


Chart not to scale

ATIS	114.8	127.2
ARR	125.9	283.9
TWR	118.4	236.6
GND	121.9	275.8