

**LOC(BC)/DME RWY 10**

CALGARY INTL  
CALGARY AB

<b>ATIS</b> 114.8 127.2	<b>ARR</b> 125.9 283.9	<b>TWR</b> 118.4 236.6	<b>GND</b> 121.9 275.8	<b>DEP</b> 119.8 255.1	<b>ELEV 3557</b> <b>TDZE 10 3547</b>
-------------------------------	------------------------------	------------------------------	------------------------------	------------------------------	---

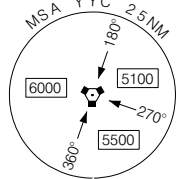
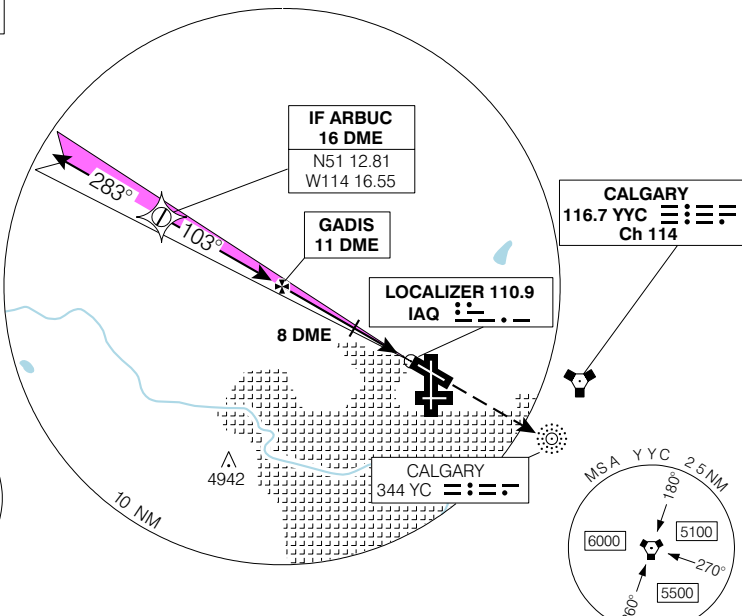
© 2006 Her Majesty The Queen in Right of Canada, Department of Natural Resources. All rights reserved

Requires minimum descent gradient of 314 ft/NM between IF and FAF

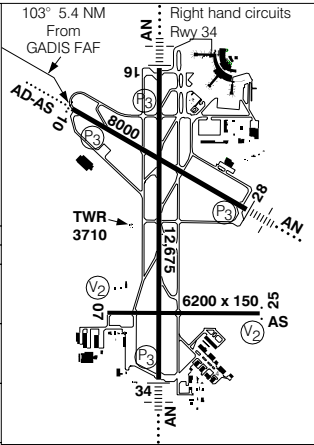
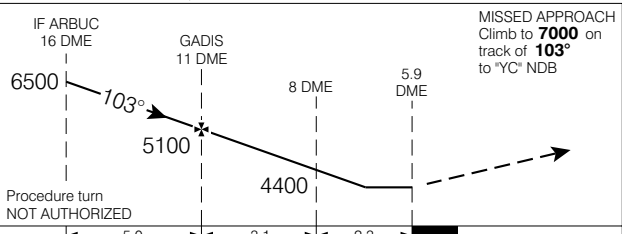
CYYC

**BACK COURSE  
NO GLIDE PATH  
IGNORE GLIDE  
PATH INDICATIONS**

**RADAR or RNAV REQUIRED**



SAFE ALT 100 NM **13,900**



CATEGORY	A		B		C		D	
LOC	<b>4060</b>		(513)		1 ½			
* CIRCLING	<b>4060</b>		(503)		1 ½		<b>4060</b>	
					(503)		2	
							(603)	
							2	

Knots	70	90	110	130	150
Min:Sec					

**LOC(BC)/DME RWY 10**

N51 06 50 W114 01 13

VAR 17° E

CALGARY AB  
CALGARY INTL

EFF 13 APR 06 CHANGE: Landing chart

NAD83

Source of Canadian Civil Aeronautical Data: © 2006 NAV CANADA. All rights reserved