

STAR

ALOMO FOUR ARR (ALOMO, ALOMO 4)

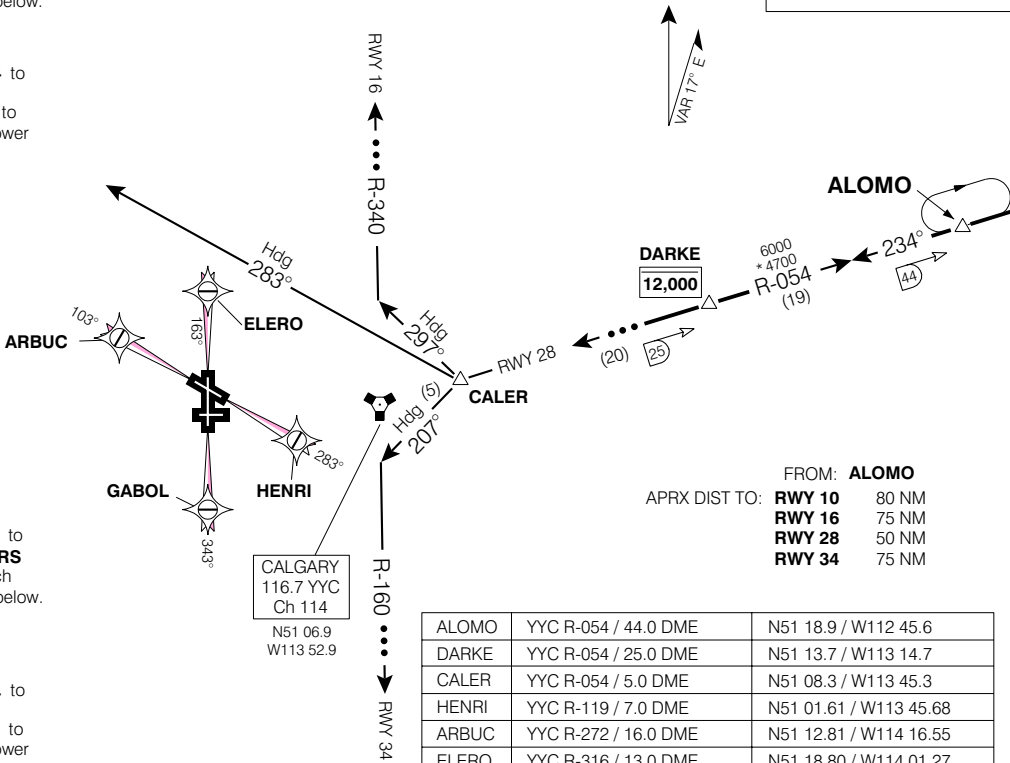


Geomatics Canada

CALGARY INTL  
CALGARY ALBERTA

ATIS 114.8 127.2  
ARR 125.9 283.9  
TWR 118.4 236.6  
GND 121.9 275.8

**MAINTAIN ASSIGNED ALTITUDE  
UNTIL CLEARED FOR APPROACH**  
••• → EXPECT RADAR VECTORS  
TO FINAL APPROACH



FROM: **ALOMO**  
APRX DIST TO: **RWY 10** 80 NM  
**RWY 16** 75 NM  
**RWY 28** 50 NM  
**RWY 34** 75 NM

ALOMO	YYC R-054 / 44.0 DME	N51 18.9 / W112 45.6
DARKE	YYC R-054 / 25.0 DME	N51 13.7 / W113 14.7
CALER	YYC R-054 / 5.0 DME	N51 08.3 / W113 45.3
HENRI	YYC R-119 / 7.0 DME	N51 01.61 / W113 45.68
ARBUC	YYC R-272 / 16.0 DME	N51 12.81 / W114 16.55
ELERO	YYC R-316 / 13.0 DME	N51 18.80 / W114 01.27
GABOL	YYC R-184 / 13.0 DME	N50 55.02 / W114 01.29

Chart not to scale

**RWY 10**

....From **ALOMO INTXN** via **YYC R-054** to **CALER INTXN**, **HDG 283°**. Expect **RADAR VECTORS** to final approach course. Do **NOT** expect lower than **10,000'** until **West** of **CALER**. **CROSS DARKE** at **12,000** or below.

**RWY 16**

....From **ALOMO INTXN** via **YYC R-054** to **CALER INTXN**, **HDG 297°** **INTERCEPT YYC R-340**. Expect **RADAR VECTORS** to final approach course. Do **NOT** expect lower than **10,000'** until **West** of **CALER**. **CROSS DARKE** at **12,000** or below.

**RWY 28**

....From **ALOMO INTXN** via **YYC R-054** to **YYC VORTAC**. Expect **RADAR VECTORS West** of **DARKE INTXN** to final approach course. **CROSS DARKE** at **12,000'** or below.

**RWY 34**

....From **ALOMO INTXN** via **YYC R-054** to **CALER INTXN**, **HDG 207°** **INTERCEPT YYC R-160**. Expect **RADAR VECTORS** to final approach course. Do **NOT** expect lower than **10,000'** until **West** of **CALER**. **CROSS DARKE** at **12,000** or below.

ALOMO FOUR ARR (ALOMO, ALOMO 4)

CALGARY ALBERTA  
CALGARY INTL

EFF 10 JUN 04

CHANGE: 282° to 283°

NAD83

NOT FOR NAVIGATION