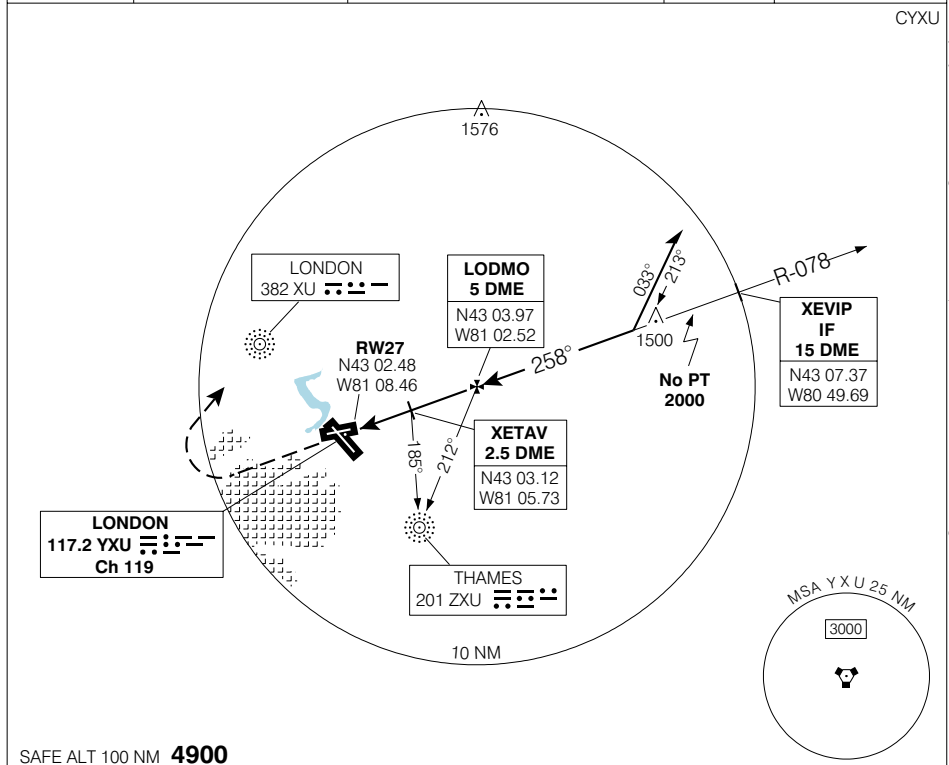


LONDON  
LONDON ON

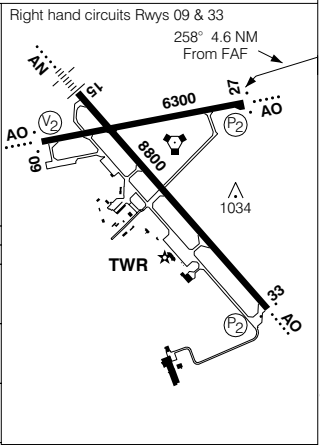
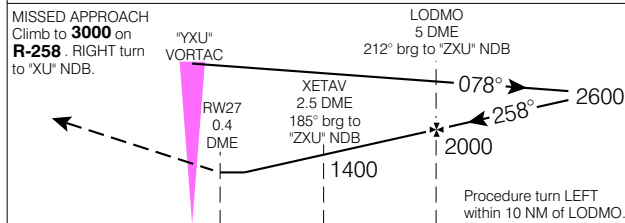
**VOR RWY 27 (GNSS)**

<p>☉ <b>ATIS</b> 127.8</p>	<p><b>ARR/DEP</b> <b>TORONTO CENTRE</b> 135.3 266.3</p>	<p>☉ <b>TWR</b> 119.4 236.6 O/T RDO 119.4 236.6 (MF 5 NM)</p>	<p>☉ <b>GND</b> 121.9 360.2</p>	<p><b>ELEV 912</b> <b>TDZE 27 902</b></p>
--------------------------------	---	---	---	---

CYXU



SAFE ALT 100 NM **4900**



CATEGORY	A	B	C	D
VOR/NDB VOR/DME	<b>1260</b>	(358)	1 ¼	
CIRCLING	<b>1420</b>	(508) 1 ½	<b>1420</b>	<b>1520</b>
			(508) 2	(608) 2

FAF to MAP 4.6 NM					
Knots	70	90	110	130	150
Min:Sec	<b>3:57</b>	<b>3:04</b>	<b>2:31</b>	<b>2:07</b>	<b>1:50</b>

**VOR RWY 27 (GNSS)**

N43 02 08 W81 09 14

VAR 9° W

LONDON ON  
LONDON

EFF 13 APR 06 CHANGE: GPS to GNSS

NAD83

© 2006 Her Majesty The Queen in Right of Canada, Department of Natural Resources. All rights reserved. Source of Canadian Civil Aeronautical Data: © 2006 NAV CANADA. All rights reserved.