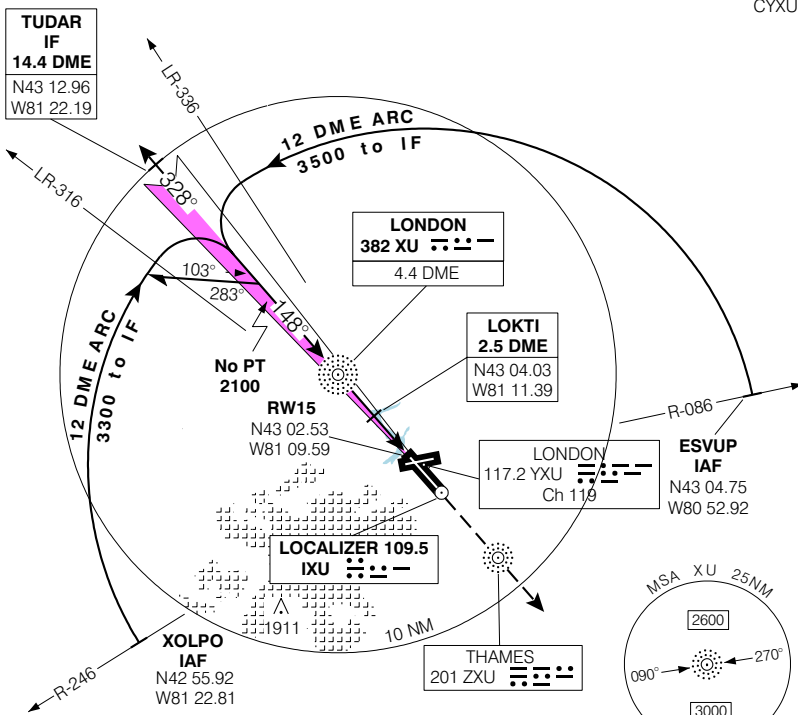


LONDON  
LONDON ON

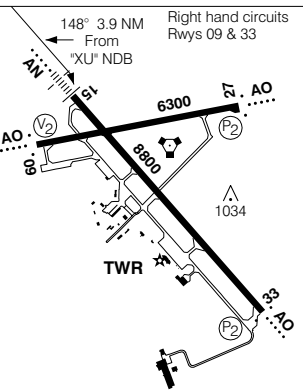
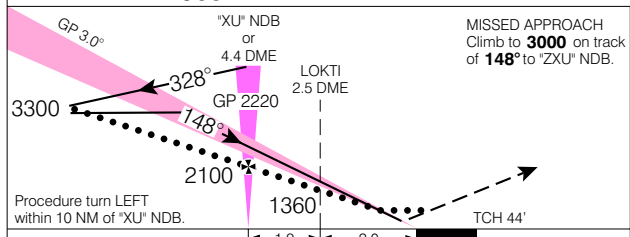
**ILS or NDB RWY 15 (GNSS)**

<b>ATIS</b> 127.8	<b>ARR/DEP</b> TORONTO CENTRE 135.3 266.3	<b>TWR</b> 119.4 236.6 O/T RDO 119.4 236.6 (MF 5 NM)	<b>GND</b> 121.9 360.2	<b>ELEV 912</b>
				<b>TDZE 15 912</b>

CYXU



SAFE ALT 100 NM **4900**



CATEGORY	A	B	C	D
ILS	<b>1112</b>	(200)	½ RVR 26	
LOC/DME	<b>1260</b>	(348)	1 RVR 50	
LOC	<b>1320</b>	(408)	1 RVR 50	
NDB	<b>1360</b>	(448)	1 RVR 50	
CIRCLING	<b>1420</b>	(508)	1 ½	<b>1420</b>
				(508)
CIRCLING	<b>1520</b>	(608)	2	<b>1520</b>
				(608)

*XU" NDB to MAP 3.9 NM					
Knots	70	90	110	130	150
Min:Sec	<b>3:20</b>	<b>2:36</b>	<b>2:08</b>	<b>1:48</b>	<b>1:34</b>

**ILS or NDB RWY 15 (GNSS)**

EFF 13 APR 06 CHANGE: GPS to GNSS

N43 02 08 W81 09 14

VAR 9° W

LONDON ON

LONDON

NAD83

© 2006 Her Majesty The Queen in Right of Canada, Department of Natural Resources. All rights reserved

Source of Canadian Civil Aeronautical Data: © 2006 NAV CANADA. All rights reserved