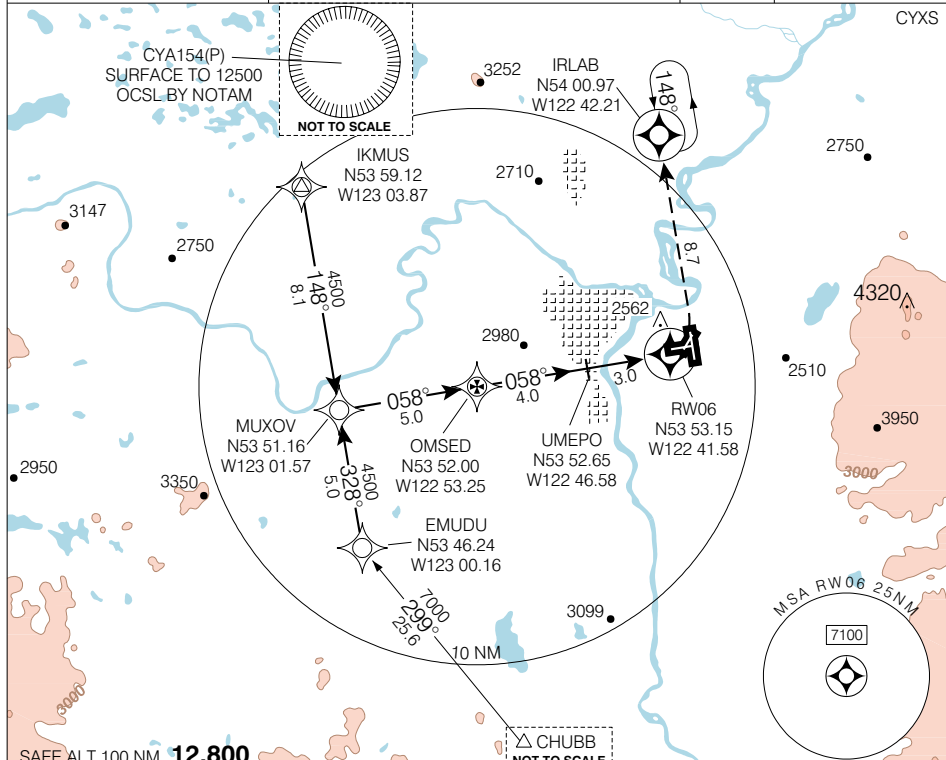


**RNAV(GNSS) RWY 06**

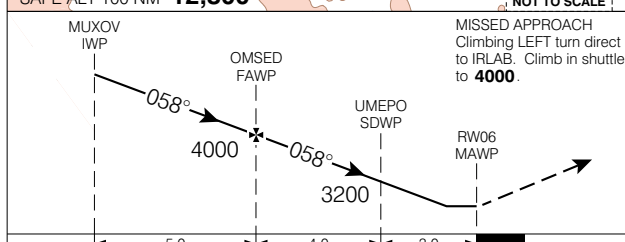
PRINCE GEORGE  
PRINCE GEORGE BC

<b>ARR/DEP</b> <b>VANCOUVER CENTRE</b> 133.8 231.95	<b>TWR</b> 118.3 327.7 O/T RADIO 118.3 (MF 5 NM)	<b>GND</b> 121.9	<b>ELEV 2267</b> <b>TDZE 06 2268</b>
---	--	---------------------	---

© 2006 Her Majesty The Queen in Right of Canada. Department of Natural Resources. All rights reserved

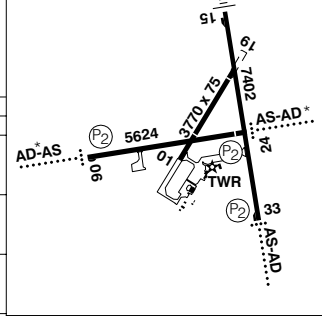


Source of Canadian Civil Aeronautical Data: © 2006 NAV CANADA. All rights reserved



Right hand circuits Rwy 19, 24 and 33.  
Rwys 06-24 and 15-33 150' wide.  
Rwy 01-19 day only.  
Rwy 15 down 0.4%.  
Rwy 24 up 0.9%.

CATEGORY	A	B	C	D
LNAV / VNAV	NOT AUTHORIZED			
LNAV	<b>2780</b>	(512)	1 ½	
CIRCLING	<b>2880</b>	(613)	2	



**RNAV(GNSS) RWY 06** N53 53 22 W122 40 44 VAR 22° E (1999)

PRINCE GEORGE BC  
PRINCE GEORGE  
NAD83

EFF 13 APR 06

CHANGE: GPS to GNSS

Knots	70	90	110	130	150
Min:Sec					