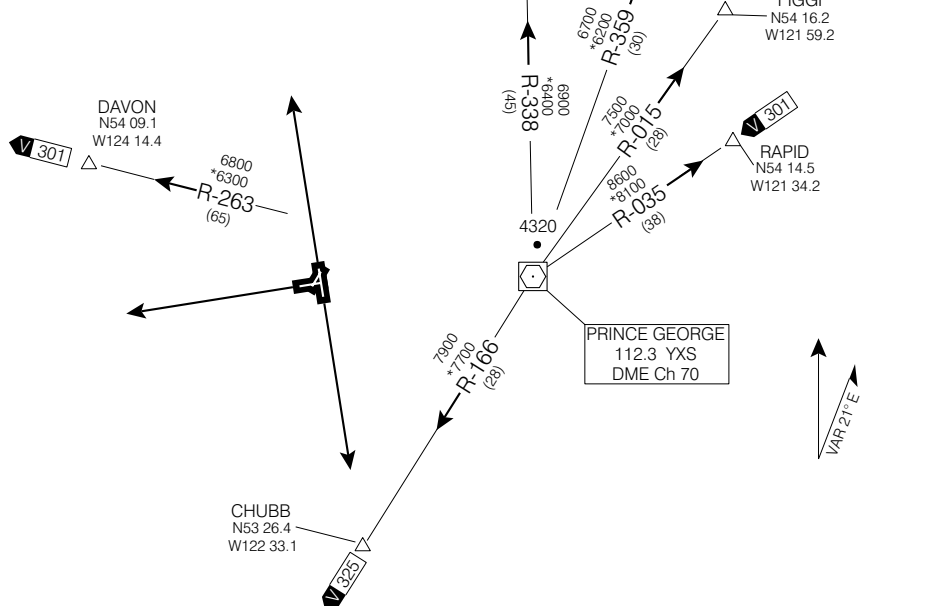


SID (VECTOR)  
**PRINCE GEORGE THREE DEP (CYXS 3.)**

PRINCE GEORGE  
 PRINCE GEORGE BC

**GND 121.9**  
**TWR 118.3 327.7**  
**O/T RADIO 118.3 (MF 5 NM)**  
**DEP VANCOUVER CENTRE**  
**133.8 231.95**



© 2006 Her Majesty The Queen in Right of Canada, Department of Natural Resources. All rights reserved

Source of Canadian Civil Aeronautical Data: © 2006 NAV CANADA. All rights reserved

**DEPARTURE ROUTE DESCRIPTION**

- Runways 15, 33:** - 1/2 - Climb runway heading or as assigned by ATC. Contact Vancouver Centre after passing 3200. Maintain 8000 or as assigned. Expect radar vectors to filed/assigned route or depicted fix and clearance to flight planned altitude/flight level 5 minutes after departure.
- Runway 24:** - SPEC VIS - Climb visual on runway heading to 2700. Continue climb runway heading or as assigned by ATC. Contact Vancouver Centre after passing 3200. Maintain 8000 or as assigned. Expect radar vectors to filed/assigned route or depicted fix and clearance to flight planned altitude/flight level 5 minutes after departure.

**PRINCE GEORGE THREE DEP (CYXS 3.)**

PRINCE GEORGE BC  
 PRINCE GEORGE

EFF 16 FEB 06 CHANGE: Editorial

NAD83 ♦