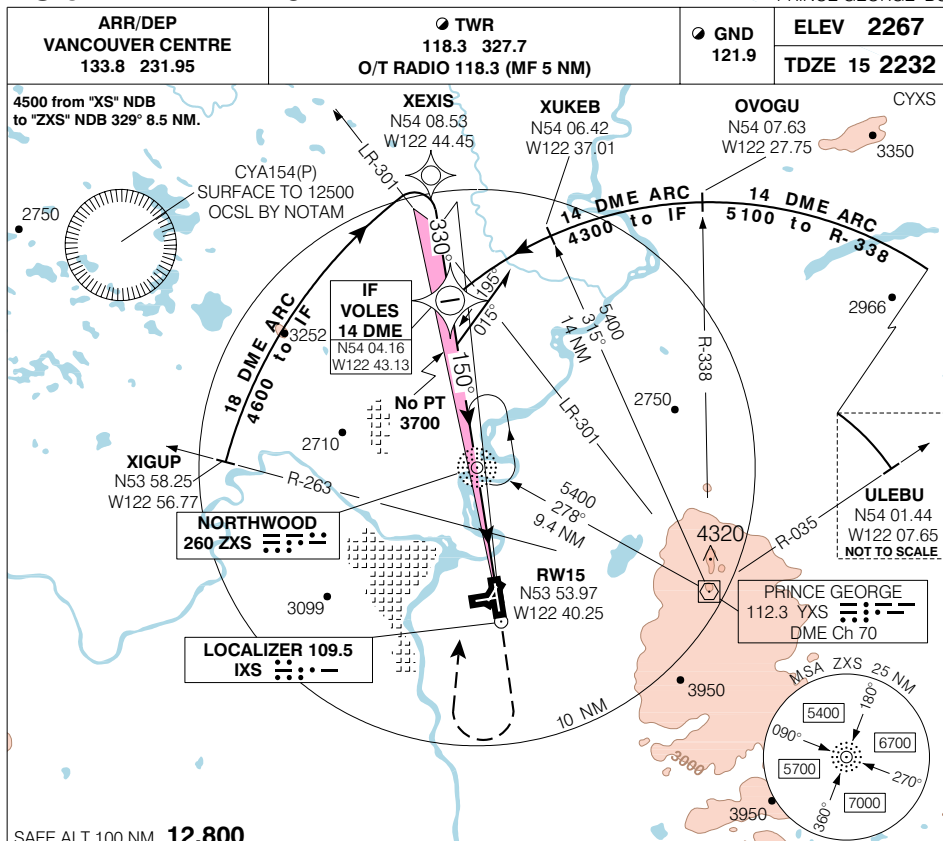
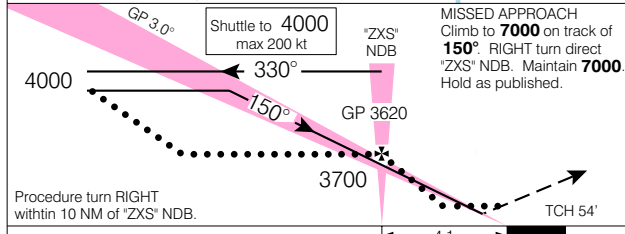


PRINCE GEORGE
PRINCE GEORGE BC

ILS or NDB RWY 15 (GNSS)

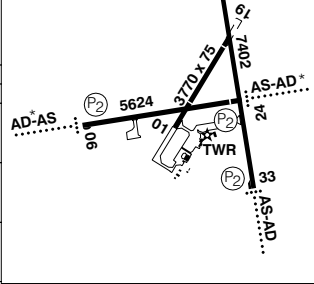


SAFE ALT 100 NM **12,800**



Right hand circuits
Rwys 19, 24 & 33.
Rwys 06-24 & 15-33
150' wide.
Rwy 01-19 day only.
Rwy 15 down 0.4%.
Rwy 24 up 0.9%.

CATEGORY	A	B	C	D
ILS	2433	(201)	½ RVR	26
LOC	2620	(388)	1 RVR	50
NDB	2880	(648)	2	
CIRCLING	2880	(613)	2	



"XZS" NDB to MAP 4.1 NM					
Knots	70	90	110	130	150
Min:Sec	3:31	2:44	2:14	1:54	1:38

ILS or NDB RWY 15 (GNSS)

EFF 13 APR 06

CHANGE: GPS to GNSS

N53 53 22 W122 40 44

VAR 21° E

PRINCE GEORGE BC
PRINCE GEORGE
NAD83

© 2006 Her Majesty The Queen in Right of Canada, Department of Natural Resources. All rights reserved. Source of Canadian Civil Aeronautical Data: © 2006 NAV CANADA. All rights reserved.