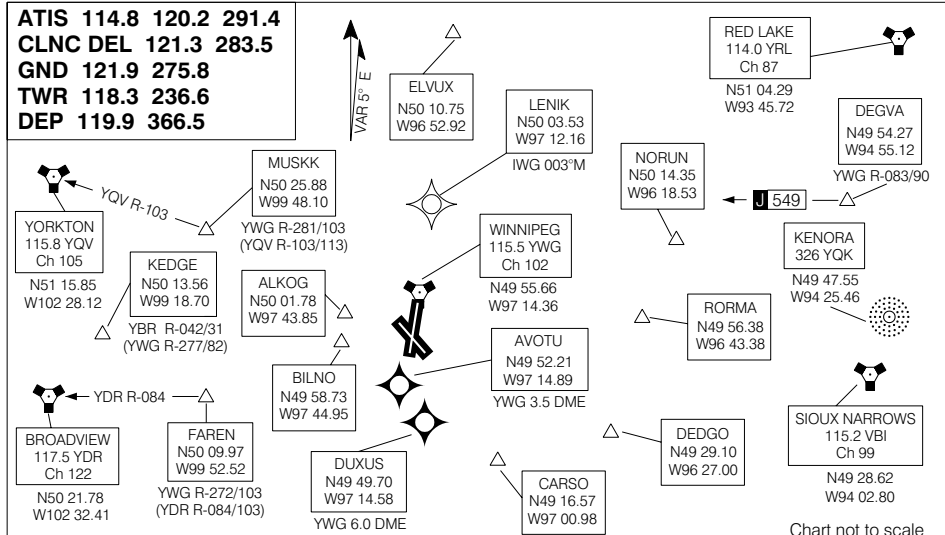


SID (VECTOR)

## WINNIPEG ONE DEP (CYWG 1)

WINNIPEG INTL  
WINNIPEG MB

## DEPARTURE ROUTE DESCRIPTION

**TURBO-JET/TURBO-FAN AIRCRAFT REFER TO NOISE ABATEMENT PROCEDURES FOR ADDITIONAL REQUIREMENTS.**

**ALL RWYS:** Climb to and maintain 4000' ASL or flight planned altitude, whichever is lower. Contact Departure Control as soon as practical after take-off. Anticipate radar vectors to filed/assigned route. Expect clearance to flight planned altitude/flight level 10 minutes after departure.

**Rwys 13, 31:** Climb rwy hdg or as assigned for radar vectors.

**Rwy 18, 36: NON TURBO-JET/TURBO-FAN aircraft.** Climb rwy hdg or as assigned for radar vectors.

**Rwy 18: TURBO-JET/TURBO-FAN aircraft.** Climb and maintain extended runway centreline (184° M) by best available means to 3.5 DME (N49 52.21 W97 14.89), (AVOTU). At 3.5 DME (AVOTU), turn left, climb hdg 171° or if able, track direct to 6 DME (N49 49.70 W97 14.58), (DUXUS). At 6 DME (DUXUS) anticipate radar vectors.

**Rwy 36: TURBO-JET/TURBO-FAN aircraft.**

- Between 23:00 - 07:00 Local time [05-13Z, (04-12DT)] Clb, turn W 5° to 359° hdg as soon as safely able. Anticipate Radar vectors.
- Between 07:01 - 22:59 local time [1301-0459Z, (1201-0359DT)] Clb & maintain extended runway centreline (004° M) by best available means. Anticipate Radar vectors.

## COMMUNICATION FAILURE

Transponder mode A/3 code 7600. On recognition of communications failure 10 minutes or less after take-off, and in IFR conditions:

- Upon reaching last assigned altitude, proceed directly on course. (See note below)
- Maintain last assigned altitude until 10 minutes after take-off;
- Climb to flight planned altitude.

NOTE: If communications failure occurs immediately after take-off (before turning), maintain runway heading to 10 DME before proceeding on course.

If communications failure occurs more than 10 minutes after take-off, comply with appropriate procedures for communication failure enroute.

## WINNIPEG ONE DEP (CYWG 1)

EFF 16 FEB 06 CHANGE: Rwy 07/25 removed; intrns coord  
proc identWINNIPEG MB  
WINNIPEG INTL  
NAD83