



STAR (RNAV)

**LANGRUTH THREE ARR (VLR. LANGR 3)**

WINNIPEG INTL  
WINNIPEG MB

**ATIS 114.8 120.2 291.4**  
**ARR 119.5 356.6**  
**TWR 118.3 236.6**  
**GND 121.9 275.8**

**ALL ALTITUDES WILL BE ISSUED BY ATC**

**If RNAV STAR includes a DTW, the following procedures apply.**

**If approach clearance is NOT RECEIVED prior to DTW**

- Fly depicted heading ••• ➔
- Expect radar vectors to final

**If approach clearance RECEIVED prior to DTW**

- Fly **RNAV STAR** via **DTW**, then
- Via **FACF**, then
- Fly the **STRAIGHT-IN** approach

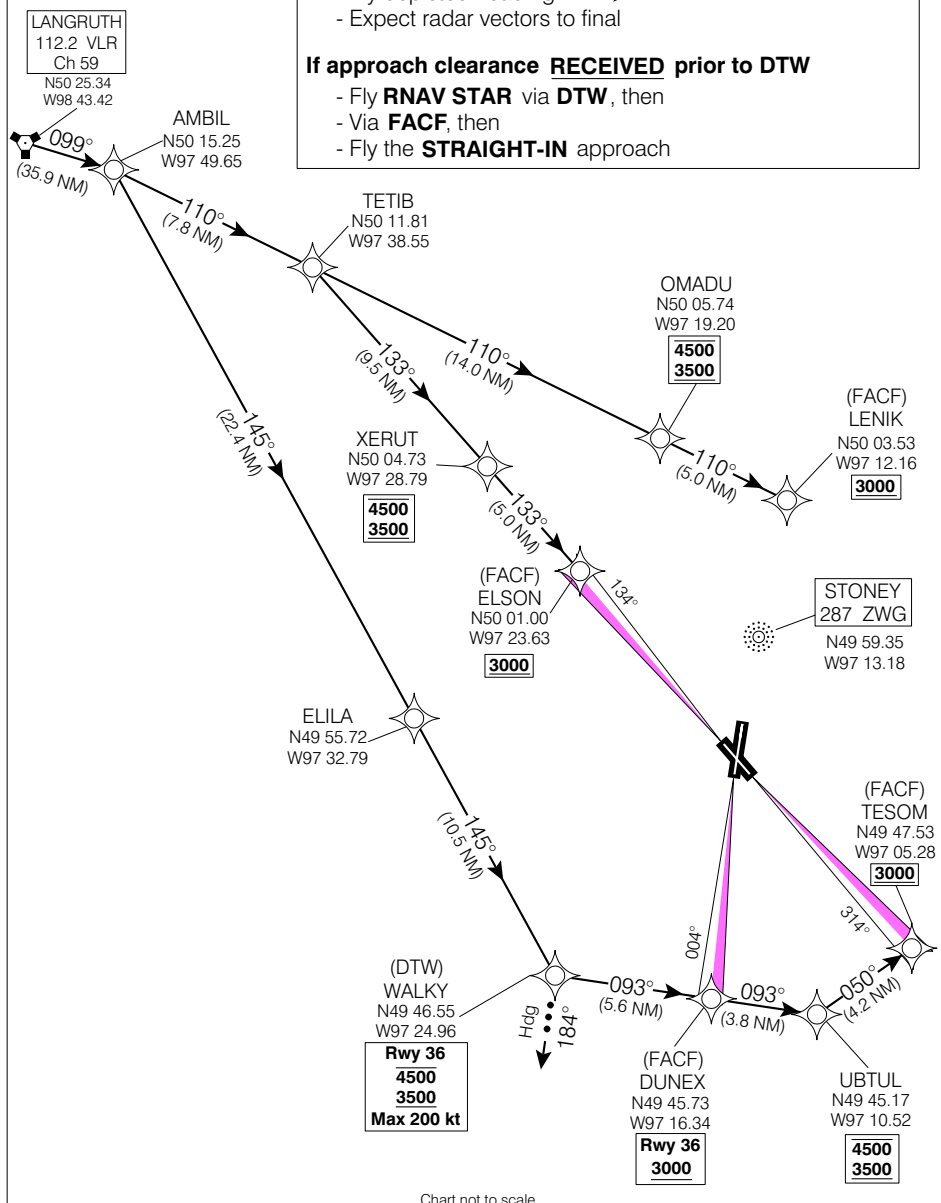


Chart not to scale

**LANGRUTH THREE ARR (VLR. LANGR 3)**

VAR 5° E (1999)

WINNIPEG MB  
WINNIPEG INTL  
NAD83

EFF 16 FEB 06

CHANGE: Rwy 07/25 removed