



| | | | |
|------|-------|-------|-------|
| ATIS | 114.8 | 120.2 | 291.4 |
| ARR | 119.5 | 356.6 | |
| TWR | 118.3 | 236.6 | |
| GND | 121.9 | 275.8 | |



MAINTAIN ASSIGNED ALTITUDE UNTIL CLEARED FOR APPROACH

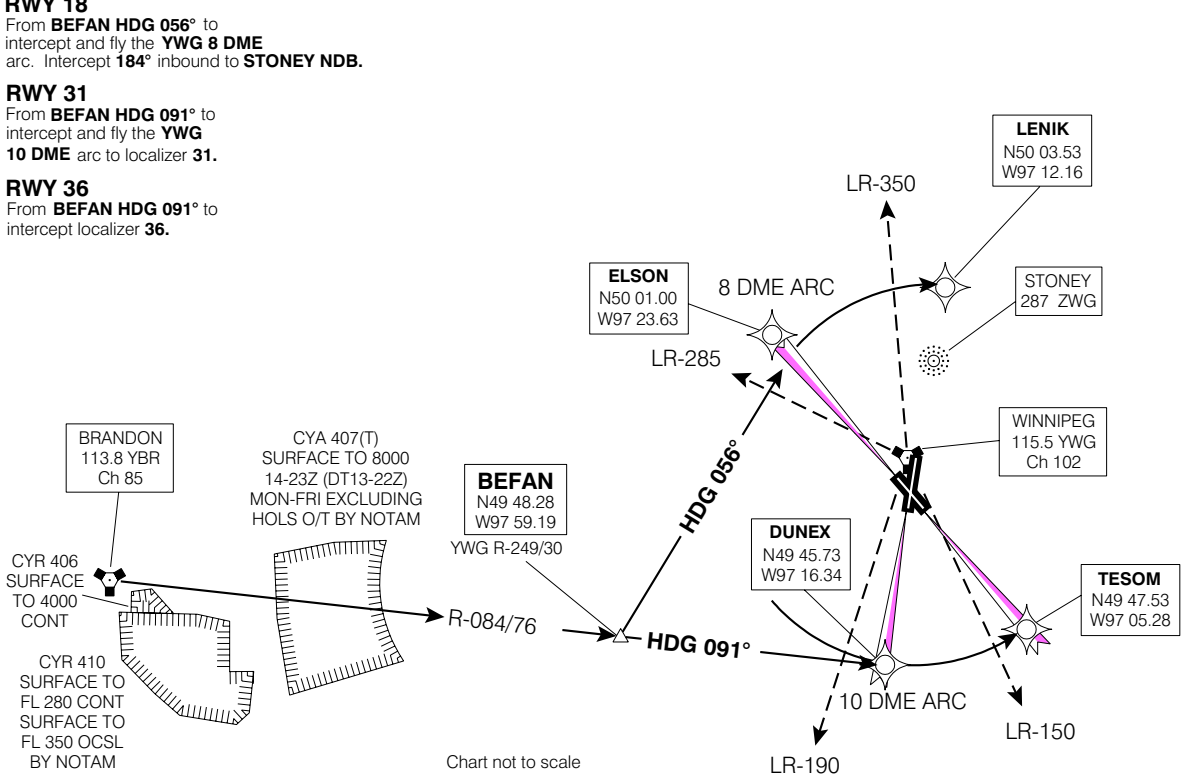
RWY 13
From **BEFAN HDG 056°** to intercept localizer **13**.

RWY 18
From **BEFAN HDG 056°** to intercept and fly the **YWG 8 DME** arc. Intercept **184°** inbound to **STONEY NDB**.

RWY 31
From **BEFAN HDG 091°** to intercept and fly the **YWG 10 DME** arc to localizer **31**.

RWY 36
From **BEFAN HDG 091°** to intercept localizer **36**.

APROX DISTANCE TO FLY TO THLD
BEFAN 13 - 35 NM
RWY 13 - 35 NM
RWY 18 - 42 NM
RWY 31 - 43 NM
RWY 36 - 35 NM



© 2006 Her Majesty The Queen in Right of Canada, Department of Natural Resources / Source of Canadian Civil Aeronautical Data: © 2006 NAV CANADA