

STAR  
ANOLA ONE ARR (ANOLA, ANOLA 1)



WINNIPEG INTL  
WINNIPEG MB

**ALL RWYS**

AN ARRIVAL CLEARANCE REQUIRES COMPLIANCE WITH PUBLISHED ARRIVAL FLIGHT PATH. MAINTAIN LAST ASSIGNED ALTITUDE UNTIL CLEARED FOR APPROACH.

**RWY 13**

From Sioux Narrows VORTAC via R-270 to **GOVIT**, then via Winnipeg R-105 to **KEBAX** then **HDG 306°**; then vectors to final approach.

**RWY 18**

From Sioux Narrows VORTAC via R-270 to **GOVIT**, then via Winnipeg R-105 to **KEBAX** then **HDG 318°**; then vectors to final approach.

**RWY 31**

From Sioux Narrows VORTAC via R-270 to **GOVIT**, then via Winnipeg R-105 to **NORAK** then **HDG 267°**; then vectors to final approach.

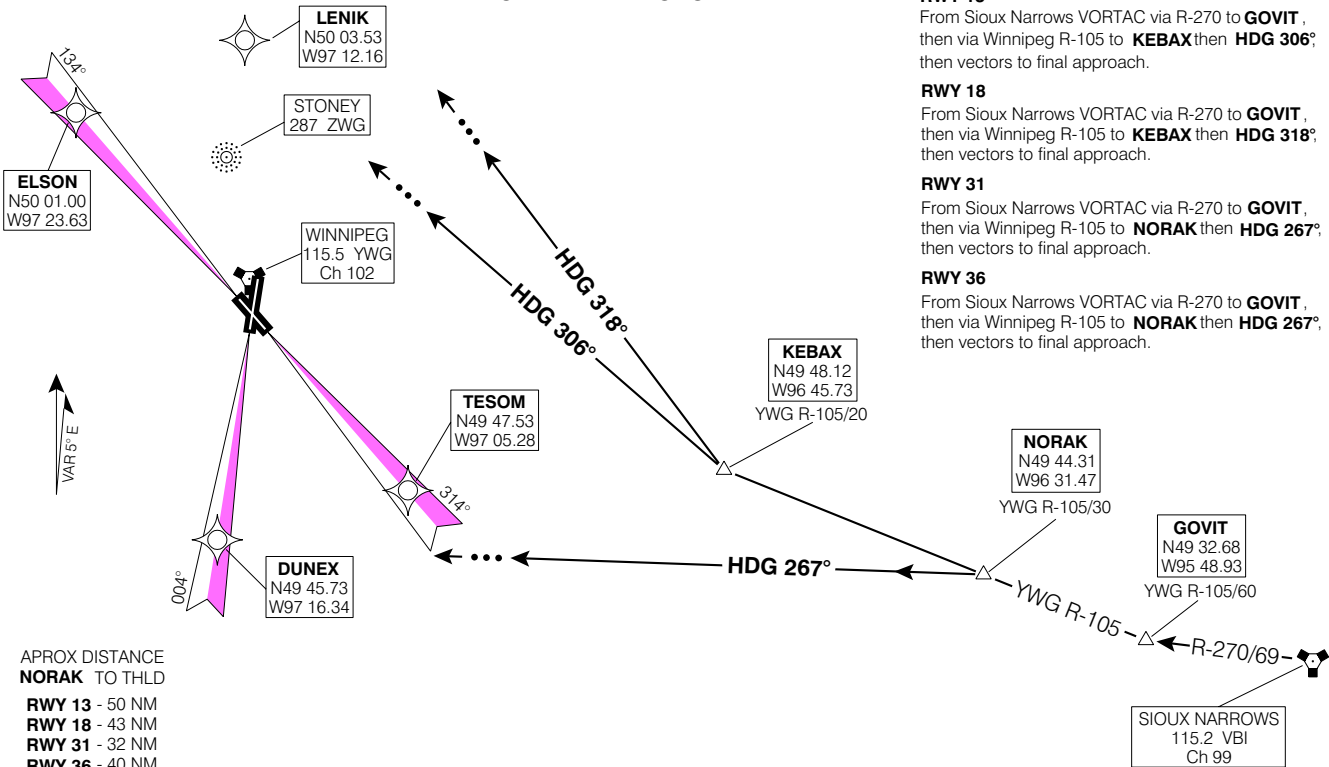
**RWY 36**

From Sioux Narrows VORTAC via R-270 to **GOVIT**, then via Winnipeg R-105 to **NORAK** then **HDG 267°**; then vectors to final approach.

**MAINTAIN ASSIGNED ALTITUDE UNTIL CLEARED FOR APPROACH**

... → **EXPECT RADAR VECTORS TO FINAL APPROACH**

**ATIS 114.8 120.2 291.4**  
**ARR 119.5 356.6**  
**TWR 118.3 236.6**  
**GND 121.9 275.8**



APROX DISTANCE TO THLD  
**RWY 13** - 50 NM  
**RWY 18** - 43 NM  
**RWY 31** - 32 NM  
**RWY 36** - 40 NM

Chart not to scale

ANOLA ONE ARR (ANOLA, ANOLA 1)  
EFF: 16 FEB 06  
CHANGE: Rwy 07/25 removed

WINNIPEG MB  
WINNIPEG INTL  
NAD83