

STAR  
NUTBE TWO ARR (YCD.NUTBE 2)

VANCOUVER INTL  
VANCOUVER BC

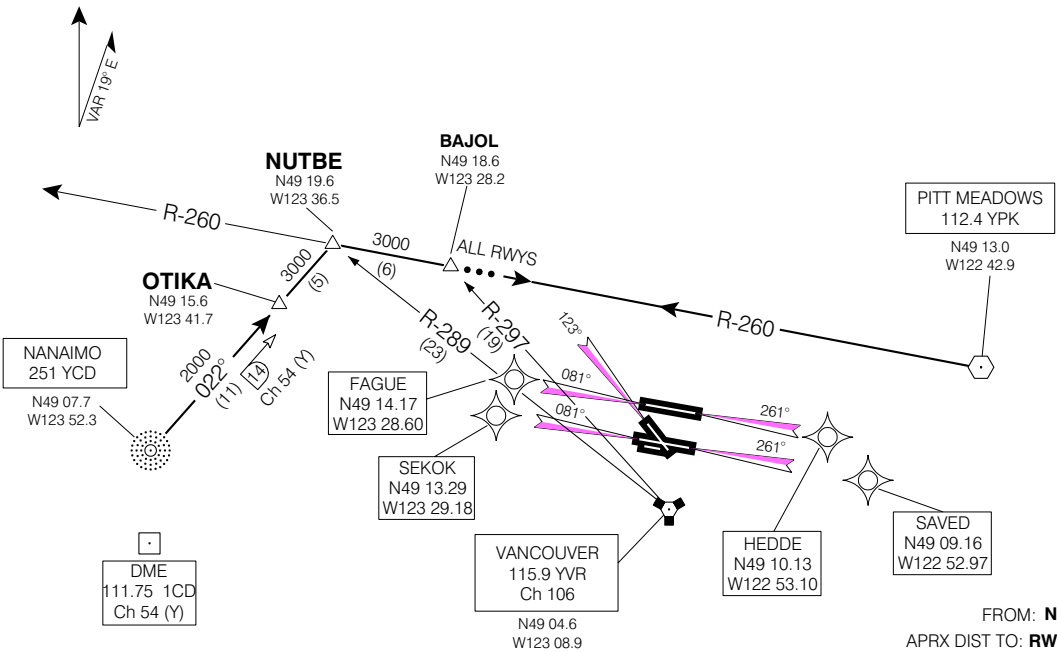
**ALL RWYS**

...From NANAIMO NDB via **TRACK 022°** to **NUTBE INTXN** then **PROCEED EASTBOUND** via **YPK R-260** to **BAJOL INTXN**. Expect **RADAR VECTORS** to final approach course.

**MAINTAIN ASSIGNED ALTITUDE UNTIL CLEARED FOR APPROACH**

••• ➔ **MAINTAIN PRESENT HEADING FOR VECTORS TO FINAL APPROACH.**

**ATIS 124.6**  
**ARR 128.6(Outer) 133.1 (Inner) 352.7**  
**TWR 119.55(N) 118.7(S) 226.5**



FROM: **NANAIMO NDB**  
APRX DIST TO: **RWY 12** 33 NM  
**RWYS 08L, 08R** 40 NM  
**RWYS 26L, 26R** 57 NM

Chart not to scale

**NUTBE TWO ARR (YCD.NUTBE 2)**  
EFF 13 APR 06 CHANGE: Editorial

VANCOUVER BC  
VANCOUVER INTL  
NAD83