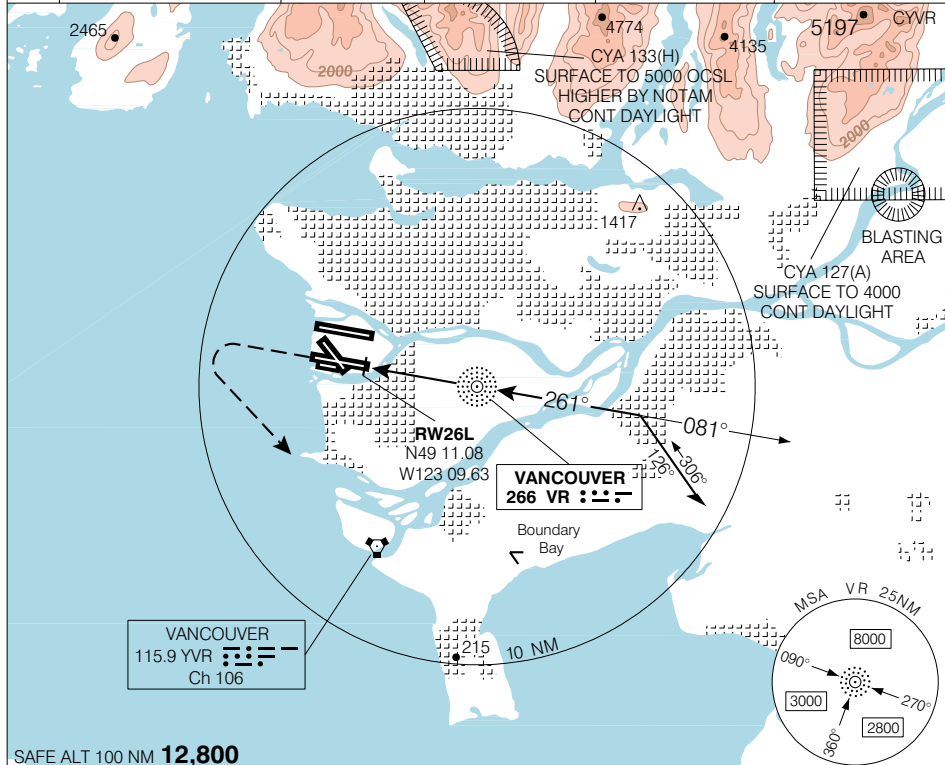


**NDB RWY 26L (GNSS)**

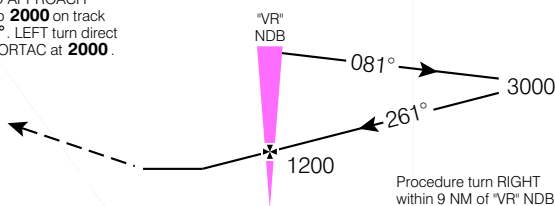
VANCOUVER INTL  
VANCOUVER BC

ATIS 124.6	ARR 128.6(Outer) 133.1(Inner) 352.7		TWR 124.0 118.7(S) 119.55(N) 226.5		GND 121.7(S) 127.15(N) 275.8		DEP 126.125(N) 132.3(S) 363.8		ELEV <b>14</b>
									TDZE <b>26L 7</b>



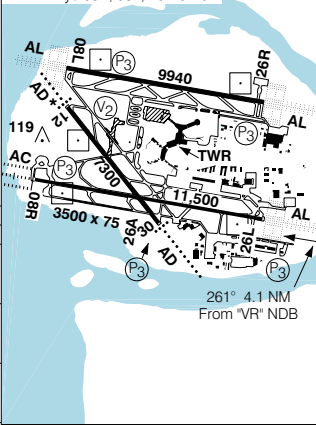
SAFE ALT 100 NM **12,800**

MISSED APPROACH  
Climb to **2000** on track of **261°**. LEFT turn direct "YVR" VORTAC at **2000**.



CATEGORY	A		B		C	D
NDB	<b>580</b>		(573)		1 ¼	
CIRCLING	<b>640</b> (626)	<b>660</b> (646)	<b>680</b> (666)	<b>780</b> (766)	2	2 ¼

TDZL Rwy 08R, 08L, 26R & 26L



"VR" NDB to MAP 4.1 NM					
Knots	70	90	110	130	150
Min:Sec	<b>3:31</b>	<b>2:44</b>	<b>2:14</b>	<b>1:54</b>	<b>1:38</b>

**NDB RWY 26L (GNSS)**

N49 11 38 W123 11 04 VAR 19° E

EFF 13 APR 06 CHANGE: GPS to GNSS

VANCOUVER BC  
VANCOUVER INTL  
NAD83