

STAR

KEINN FIVE ARR (KEINN.KEINN 5)

VANCOUVER INTL  
VANCOUVER BC

**POWOL TRANSITION (POWOL.KEINN 5):**

... From **POWOL INTXN** via **YZT R-082** to **QUODY INTXN** then via **YVR R-312** to **KEINN INTXN**. Thence ...

**TRENA TRANSITION (TRENA.KEINN 5):**

... From **TRENA INTXN** via **YVR R-312** to **KEINN INTXN**. Thence ...

**ELIDI TRANSITION (ELIDI.KEINN 5):**

... From **ELIDI INTXN** via **TOU R-359** to **KEINN INTXN**. Thence ...

**RWYS 08L, 08R**

... From **KEINN INTXN** via **YVR R-312** to **FASBO INTXN**. Cross **AQUIN INTXN** at **12,000** or below and at **230 kts or less**. At **FASBO INTXN** turn **RIGHT** to intercept and track **YPK R-260 WESTBOUND**. Expect **RADAR VECTORS** to final approach course.

**RWY 12**

... From **KEINN INTXN** via **YVR R-312** to **CEESE INTXN**. Cross **AQUIN INTXN** at **12,000** or below and at **230 kts or less**. From **CEESE INTXN** fly **HDG 142°**. Expect **RADAR VECTORS** to final approach course.

**RWYS 26L, 26R**

... From **KEINN INTXN** via **YVR R-312** to **FASBO INTXN**. Jet acft expect to Cross **CEESE INTXN** at **12,000** or below. Jet acft Cross **CEESE INTXN** at **250 kt**. Non-Jet acft Cross **CEESE INTXN** at **10,000**. At **FASBO INTXN** turn **LEFT** to intercept and track **YPK R-260 EASTBOUND**. Expect **RADAR VECTORS** to final approach course.

**MAINTAIN ASSIGNED ALTITUDE UNTIL CLEARED FOR APPROACH**

... → **EXPECT RADAR VECTORS TO FINAL APPROACH**

FROM: **KEINN**  
APRX DIST TO:  
**RWYS 08L & 08R - 55 NM**  
**RWYS 26L & 26R - 69 NM**  
**Rwy 12 - 43 NM**

**ATIS 124.6**  
**ARR 128.6(Outer) 133.1(Inner)**  
**352.7**  
**TWR 119.55(N) 118.7(S)**  
**226.5**

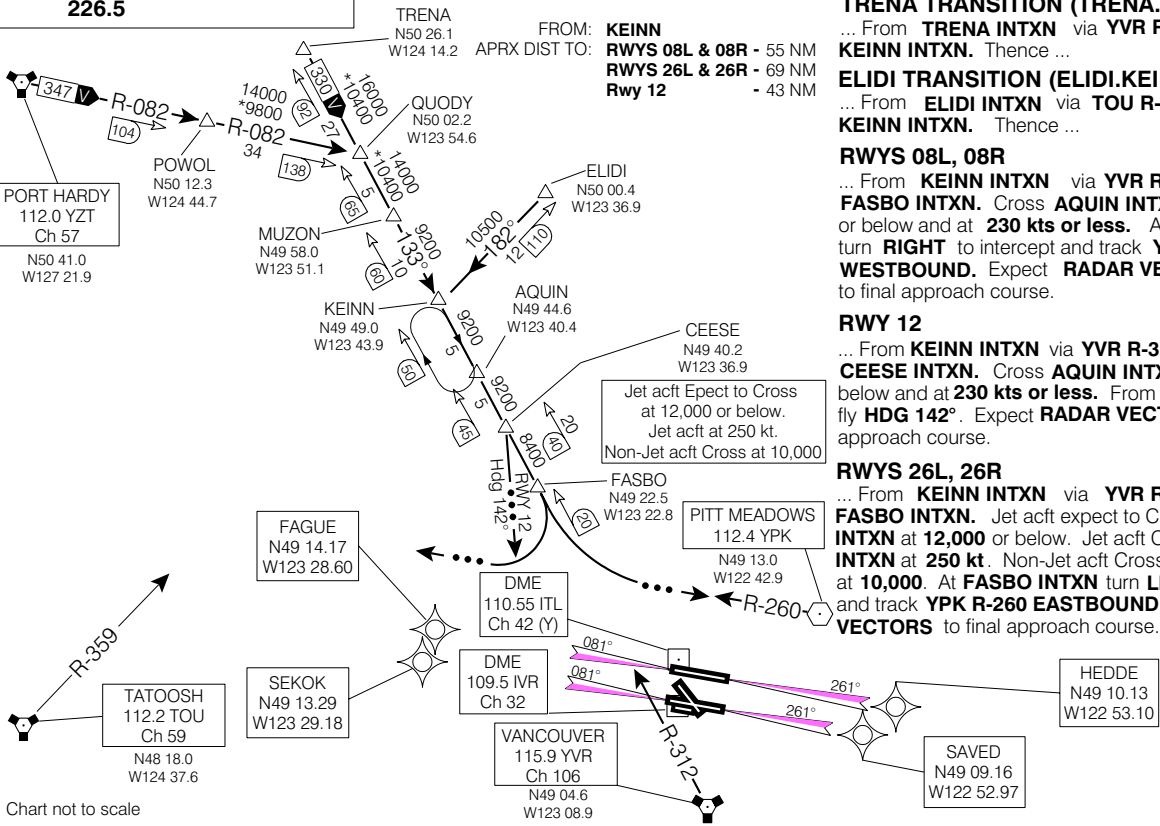


Chart not to scale

KEINN FIVE ARR (KEINN.KEINN 5)

EFF 13 APR 06

CHANGE: Revised

VANCOUVER BC  
VANCOUVER INTL  
NAD83