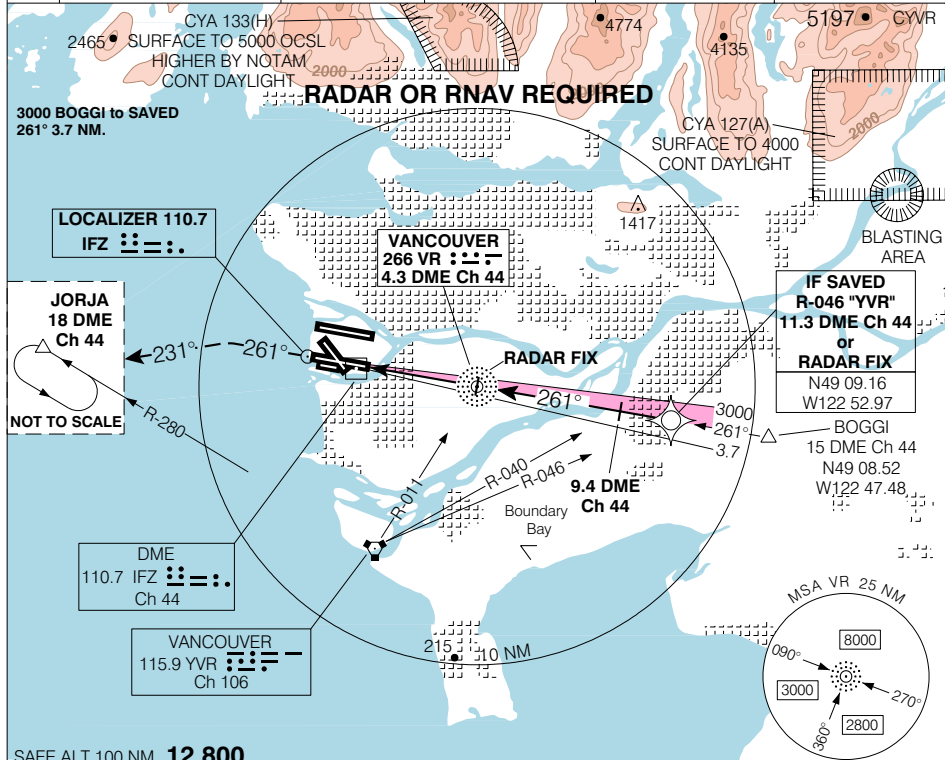


ILS or ILS/RADAR RWY 26L

VANCOUVER INTL
VANCOUVER BC

ATIS 124.6	ARR 128.6(Outer) 133.1(Inner) 352.7	TWR 124.0 118.7(S) 119.55(N) 226.5	GND 121.7(S) 127.15(N) 275.8	DEP 126.125(N) 132.3(S) 363.8	ELEV 14 TDZE 26L 7
----------------------	--	---	---	--	-------------------------------------



SAFE ALT 100 NM **12,800**

MISSED APPROACH
Climb to **420** on Hdg **261°**
Then climbing **LEFT** turn
HDG **231°** to **2000**, intercept
OBD **R-280** from "YVR". Upon
interception climb to **3000**.
Hold as published at JORJA.

"VR" NDB
4.3 DME Ch 44
or
RADAR FIX

R-040 "YVR"
9.4 DME Ch 44

IF SAVED
R-046 "YVR"
11.3 DME Ch 44
or
RADAR FIX

GP 3.0°

GP 1390

3000

1500

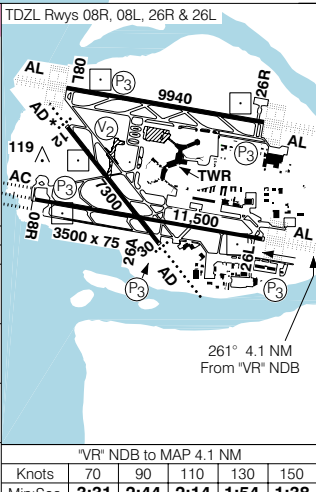
261°

Procedure turn
NOT AUTHORIZED

TCH 60'

4.1 5.0 2.0

CATEGORY	A	B	C	D
ILS ILS/RADAR	207	(200)	½ RVR 26	
LOC LOC/VOR LOC/RADAR	480	(473)	1 RVR 50	
CIRCLING	NOT AUTHORIZED			



ILS or ILS/RADAR RWY 26L

EFF 13 APR 06 CHANGE: Revised

VAR 19° E
N49 11 38 W123 11 04

VANCOUVER BC
VANCOUVER INTL
NAD83