

STAR (RNAV) RWYS 26L & 26R
GRIZZ EIGHT ARR (ACORD.GRIZZ 8)

VANCOUVER INTL
VANCOUVER BC

ATIS 124.6
ARR 128.6(Outer) 133.1(Inner) 352.7
TWR 119.55(N) 118.7(S) 226.5

ALL ALTITUDES WILL BE ISSUED BY ATC

If RNAV STAR includes a DTW, the following procedures apply.

If approach clearance is NOT RECEIVED prior to DTW

- Fly depicted heading **•••** ➔
- Expect radar vectors to final

If approach clearance RECEIVED prior to DTW

- Fly **RNAV STAR** via **DTW**, then
- Via **FACF**, then
- Fly the **STRAIGHT-IN** approach

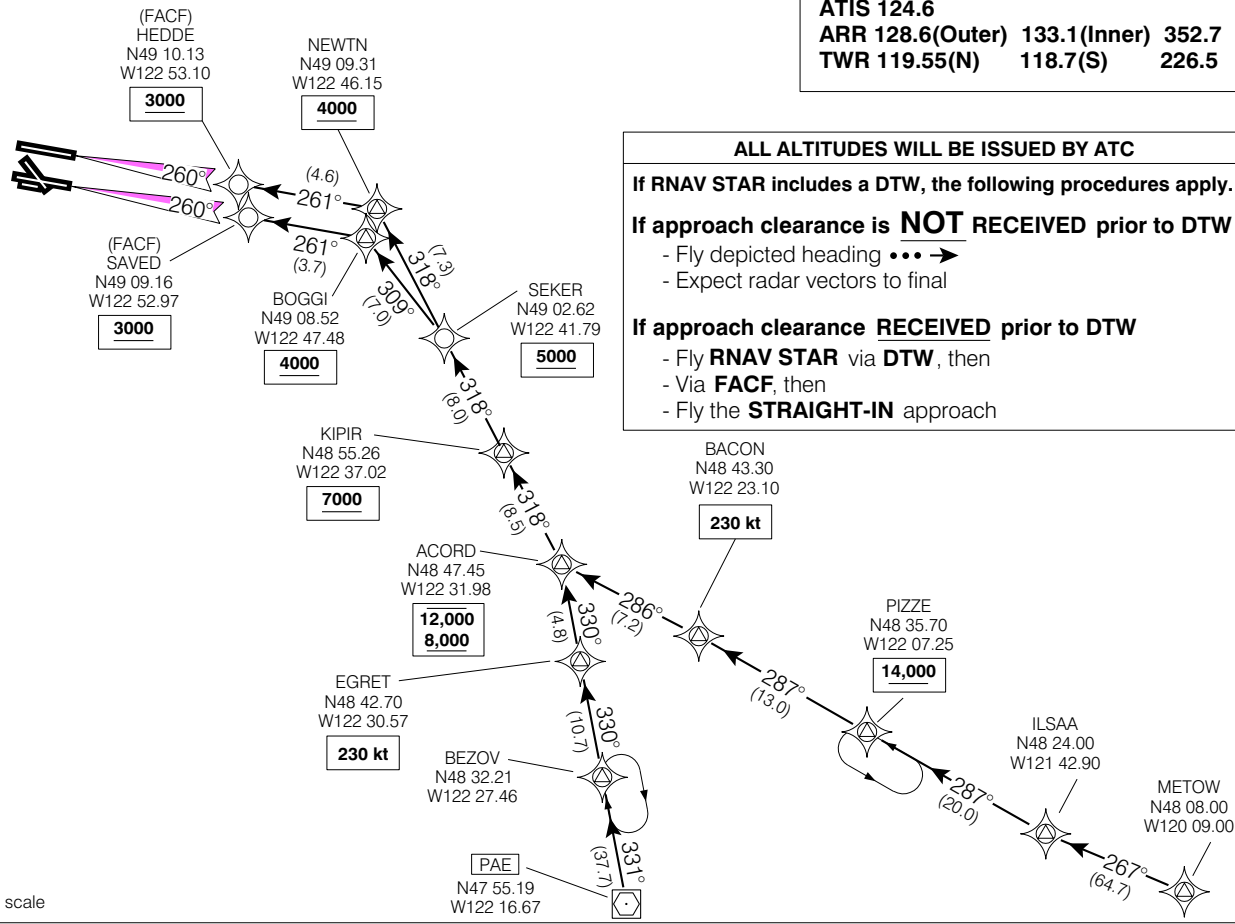


Chart not to scale

Source of Canadian Civil Aeronautical Data: © 2006 NAV CANADA All rights reserved
© 2006 Her Majesty The Queen in Right of Canada, Department of Natural Resources All rights reserved

GRIZZ EIGHT ARR (ACORD.GRIZZ 8)
EFF 13 APR 06
CHANGE: Proc Ident

VAR 1° 19' E (2003)

VANCOUVER BC
VANCOUVER INTL
NAD83