

STAR

GARTH ONE ARR (ACORD, GARTH 1)

VANCOUVER INTL
VANCOUVER B.C.

RWYS 26L & 26R

PAINE TRANSITION (PAE.GARTH 1):

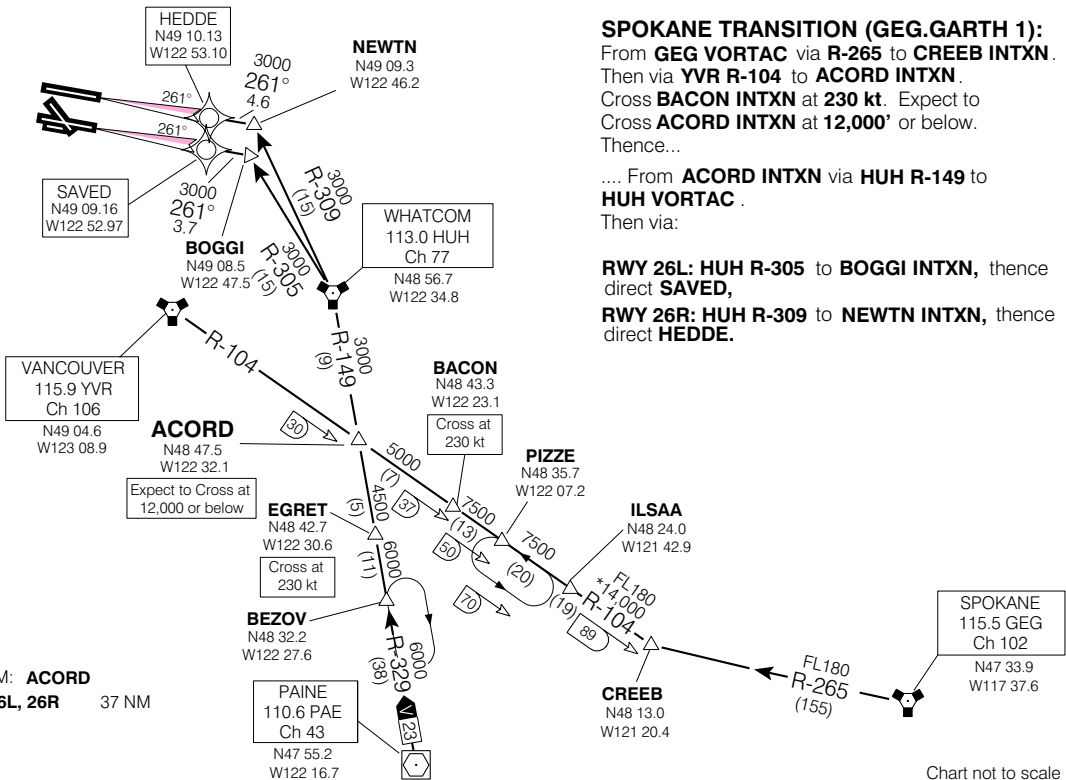
From PAE VOR via R-329 to ACORD INTXN .
Cross EGRET INTXN at 230 kt. Expect to
Cross ACORD INTXN at 12,000' or below.
Thence...

SPOKANE TRANSITION (GEG.GARTH 1):

From GEG VORTAC via R-265 to CREEB INTXN .
Then via YVR R-104 to ACORD INTXN .
Cross BACON INTXN at 230 kt. Expect to
Cross ACORD INTXN at 12,000' or below.
Thence...

.... From ACORD INTXN via HUH R-149 to
HUH VORTAC .
Then via:

RWY 26L: HUH R-305 to BOGGI INTXN, thence
direct SAVED,
RWY 26R: HUH R-309 to NEWTN INTXN, thence
direct HEDDE.



**MAINTAIN ASSIGNED ALTITUDE
UNTIL CLEARED FOR APPROACH**

••• → **MAINTAIN PRESENT
HEADING FOR VECTORS
TO FINAL APPROACH.**

ATIS 124.6
ARR 128.6(Outer) 133.1 (Inner)
352.7
TWR 119.55(N) 118.7(S)
226.5

FROM: **ACORD**
APRX DIST TO: **RWYS 26L, 26R** 37 NM

GARTH ONE ARR (ACORD, GARTH 1)

VANCOUVER B.C.
VANCOUVER INTL
NAD83

EFF 13 APR 06

CHANGE: Editorial

NOT FOR
NAVIGATION