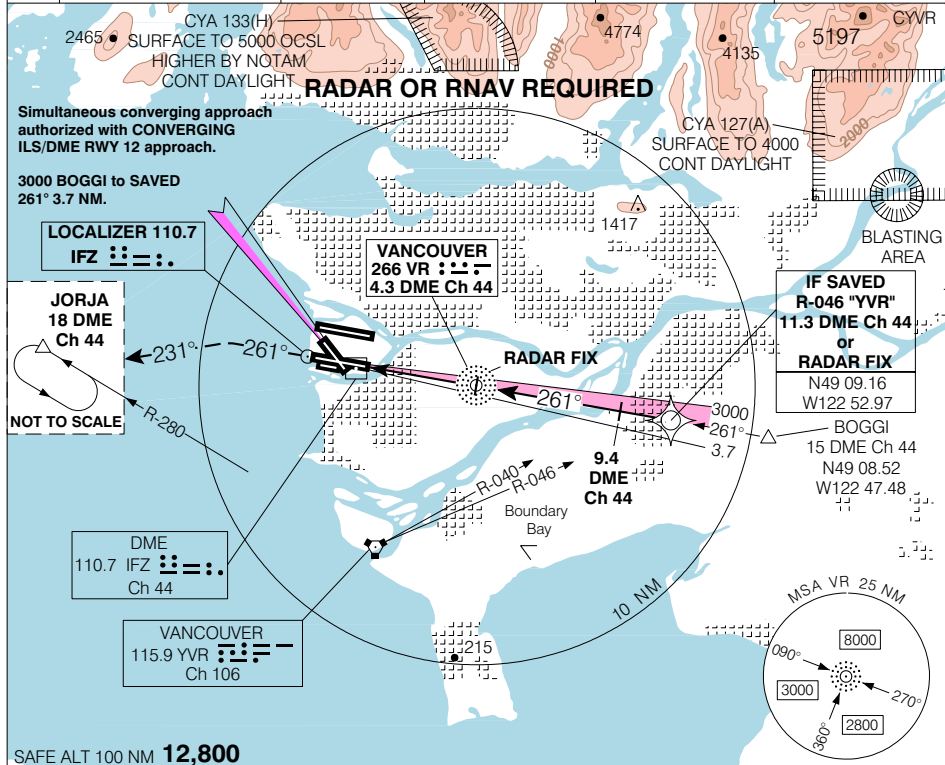


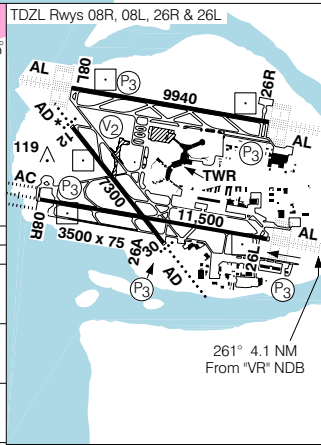
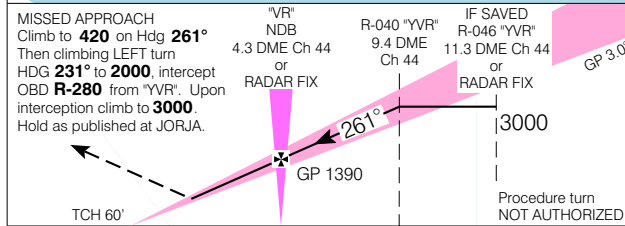
CONVERGING ILS or ILS/RADAR RWY 26L

VANCOUVER INTL
VANCOUVER BC

ATIS 124.6	ARR 128.6(Outer) 133.1(Inner) 352.7	TWR 124.0 118.7(S) 119.55(N) 226.5	GND 121.7(S) 127.15(N) 275.8	DEP 126.125(N) 132.3(S) 363.8	ELEV 14 TDZE 26L 7
----------------------	--	---	---	--	-------------------------------------



SAFE ALT 100 NM **12,800**



CATEGORY	A	B	C	D
CONVERGING ILS ILS/RADAR	207		(200)	½ RVR 26
CIRCLING	NOT AUTHORIZED			

CONVERGING ILS or ILS/RADAR RWY 26L

VAR 19° E

VANCOUVER BC

EFF 13 APR 06 CHANGE: Revised

N49 11 38 W123 11 04

VANCOUVER INTL
NAD83